

# HOB382MB2

|                                |                                    |
|--------------------------------|------------------------------------|
| Product Family                 | Hob                                |
| Built-in type                  | Ultra-low profile or Fully Flushed |
| Dimensions                     | 83 cm                              |
| Power supply                   | Electric                           |
| Type                           | Induction with integrated hood     |
| Extraction                     | Extraction                         |
| Electronic control             | Yes                                |
| EAN code                       | 8017709341886                      |
| Energy efficiency class ( EEC) | A+                                 |



## Aesthetics



|                         |                 |
|-------------------------|-----------------|
| Aesthetic               | Classica        |
| Colour                  | Matt Black      |
| Finishing               | Glass           |
| Material                | Glass           |
| Glass type              | Ceramic         |
| Glass edge              | Straight edge   |
| Pan stands              | Stainless steel |
| Double ceramization     | Yes             |
| Type of control setting | EVO Slider      |
| Slider                  | Yes             |
| LED colours             | White           |
| Control knob position   | Front           |
| Serigraphy colour       | Grey            |

## Programs / Functions



|                                   |                        |
|-----------------------------------|------------------------|
| No. of induction cook zones       | 4                      |
| Time-setting options              | Spegnimento automatico |
| No. of cooking zones with booster | 4                      |
| No. of Flexible zones             | 2                      |
| Main on/off switch                | Yes                    |
| Power levels                      | 9                      |
| Total no. of cook zones           | 4                      |

## Options



|                                     |            |  |                          |
|-------------------------------------|------------|--|--------------------------|
| <b>Multizone Option</b>             | Yes        | <b>Residual time indicator</b>             | Yes                      |
| <b>Flexible Zone Type</b>           | MultiZone  | <b>Limited Power</b>                       | Si Advance               |
| <b>Worktop Cut-Out</b>              | 490x750 mm | <b>Consumption Mode</b>                    |                          |
| <b>Keep warm automatic function</b> | Yes        | <b>Limited Power Consumption Mode in W</b> | 2800, 3500, 4500, 7400 W |
| <b>End cooking timer</b>            | 4          | <b>Showroom Demo Option</b>                | Yes                      |
| <b>Pause option</b>                 | Yes        | <b>Control Lock / Child Safety</b>         | Yes                      |
| <b>Minute minder</b>                | 1          | <b>Cleaning option</b>                     | Yes                      |
| <b>End of cooking alarm</b>         | Yes        | <b>Quick start</b>                         | Yes                      |
|                                     |            | <b>Rapid level selection</b>               | Yes                      |

## Technical Features



|  |               |   |     |
|--|---------------|---|-----|
| Front-left - Induction - Multizone - 2.10 kW - Booster 3.0 kW - 21.0x19.0 cm     |               |   |     |
| Rear-left - Induction - Multizone - 2.10 kW - Booster 3.00 kW - 21.0x19.0 cm     |               |   |     |
| Rear-right - 2.10 kW - Booster 3.00 kW - 21.0x19.0 cm                            |               |   |     |
| Front-right - 2.10 kW - Booster 3.00 kW - 21.0x19.0 cm                           |               |   |     |
| Multizone left - Booster 3.70 kW - 39.0x21.0 cm                                  |               |   |     |
| Multizone right - Booster 3.70 kW - 39.0x21.0 cm                                 |               |   |     |
| <b>Automatic setting according to pan dimension</b>                              | Yes           | <b>Automatic switch off when overflow</b>     | Yes |
| <b>pan detection</b>   | Yes, min 9 cm | <b>Residual heat indicator</b>                | Yes |
| <b>Permanent Automatic Pot Detection with indication of the relative control</b> | Yes           | <b>Protection against accidental start up</b> | Yes |

## Accessories Included

|                          |  |
|--------------------------|--|
| <b>Other accessories</b> | Filtering kit and charcoal filter regenerable included |
|--------------------------|--|

## Electrical Connection

|   |             |  |                              |
|---|-------------|--|------------------------------|
| <b>Plug</b>                             | Not present | <b>Type of electric cable supplied</b> | Yes, Single and Double phase |
| <b>Electrical connection rating (W)</b> | 7620 W      | <b>Frequency (Hz)</b>                  | 50/60 Hz                     |
| <b>Current</b>                          | 33 A        | <b>Power supply cable length</b>       | 120 cm                       |
| <b>Voltage (V)</b>                      | 220-240 V   | <b>Terminal box</b>                    | 6 poles                      |
| <b>Voltage 2 (V)</b>                    | 380-415 V   |  |                              |

## Controls (hood)

|                      |               |         |     |
|----------------------|---------------|---------|-----|
| Hood control setting | Touch control | Display | Yes |
| Led color            | Bianco        |         |     |

## Programs / Functions (hood)

|                 |     |  |   |
|-----------------|-----|--|---|
| Delay function  | Yes | Hood time setting                                    | Delay   |
| No. of speeds   | 8   | Other options  | Kit for Recirculation and Extraction included |
| Intensive speed | 2   | Automatic connection between integrated hood and hob | yes   |

## Technical Features (Hood)

|                              |                       |                              |                  |
|------------------------------|-----------------------|------------------------------|------------------|
| Free outlet maximum capacity | 650 m <sup>3</sup> /h | Anti-grease filters          | Inox             |
| Motor power                  | 220 W                 | Charcoal filters included    | YES, regenerable |
| No. of filters               | 1                     | Filter replacement indicator | Yes              |

## Performance / Energy Label (hood)

|  |                       |   |                       |
|--|-----------------------|---|-----------------------|
| Fluid Dynamic Efficiency (FDE)   | 32.10                 | Airborne acoustical A-weighted sound Power Emission at maximum speed (SPE <sub>max</sub> )  | 68 dBA                |
| Fluid Dynamic Efficiency class (FDEC)  | A                     | Airbourne acoustical A-weighted sound power emission at boost speed (SPE <sub>boost</sub> ) | 73 dBA                |
| Lighting Efficiency (LE)   | 0.0 lux/W             | Power Consumption in Off mode (P <sub>o</sub> )   | 0.49 W                |
| Lighting Efficiency Class (LEC)  | NA                    | Time increase factor (F)  | 0.8                   |
| Grease Filtering Efficiency (GFE)  | 85.1 %                | Energy Efficiency Index   | 44.2                  |
| Grease Filtering Efficiency Class (GFEC)   | B                     | Measured air flow rate at best efficiency point (Q <sub>bep</sub> )                         | 320 m <sup>3</sup> /h |
| Air flow at mininum speed (Q <sub>min</sub> )  | 230 m <sup>3</sup> /h | Measured air pressure at best efficiency point (P <sub>bep</sub> )                          | 502 Pa                |
| Air flow at maximum speed (Q <sub>max</sub> )  | 500 m <sup>3</sup> /h | Measured electric power input at best efficiency point (W <sub>bep</sub> )                  | 139 W                 |
| Air flow at boost speed (Q <sub>boost</sub> )  | 630 m <sup>3</sup> /h | Sound power level at highest setting (L <sub>wa</sub> )                                     | 68 dBA                |
| Airbourne acouistical A-weighted sound Power Emission at minimum speed (SPE <sub>min</sub> ) | 49 dBA                |   |                       |

---

## Speed 1

|                            |                       |
|----------------------------|-----------------------|
| Extraction rate IEC 61591  | 230 m <sup>3</sup> /h |
| Noise level IEC 60704-2-13 | 49 dBA                |
| Pressure                   | 280 Pa                |
| Power                      | 40 W                  |

---

## Speed 2

|                            |                       |
|----------------------------|-----------------------|
| Extraction rate IEC 61591  | 270 m <sup>3</sup> /h |
| Noise level IEC 60704-2-13 | 51 dBA                |
| Pressure                   | 370 Pa                |
| Power                      | 50 W                  |

---

## Speed 3

|                            |                       |
|----------------------------|-----------------------|
| Extraction rate IEC 61591  | 340 m <sup>3</sup> /h |
| Noise level IEC 60704-2-13 | 55 dBA                |
| Pressure                   | 400 Pa                |
| Power                      | 70 W                  |

---

## Speed 4

|                            |                       |
|----------------------------|-----------------------|
| Extraction rate IEC 61591  | 370 m <sup>3</sup> /h |
| Noise level IEC 60704-2-13 | 60 dBA                |
| Pressure                   | 450 Pa                |
| Power                      | 90 W                  |

---

## Speed 5

|                            |                       |
|----------------------------|-----------------------|
| Extraction rate IEC 61591  | 400 m <sup>3</sup> /h |
| Noise level IEC 60704-2-13 | 62 dBA                |
| Pressure                   | 500 Pa                |
| Power                      | 100 W                 |

---

## Speed 6

|                            |                       |
|----------------------------|-----------------------|
| Extraction rate IEC 61591  | 435 m <sup>3</sup> /h |
| Noise level IEC 60704-2-13 | 63 dBA                |
| Pressure                   | 550 Pa                |
| Power                      | 120 W                 |

---

## Speed 7

|                            |                       |
|----------------------------|-----------------------|
| Extraction rate IEC 61591  | 460 m <sup>3</sup> /h |
| Noise level IEC 60704-2-13 | 65 dBA                |
| Pressure                   | 600 Pa                |
| Power                      | 150 W                 |

---

## Speed 8

|                            |                       |
|----------------------------|-----------------------|
| Extraction rate IEC 61591  | 500 m <sup>3</sup> /h |
| Noise level IEC 60704-2-13 | 68 dBA                |
| Pressure                   | 620 Pa                |
| Power                      | 170 W                 |

---

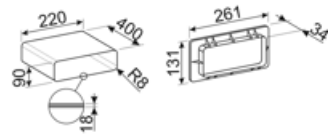
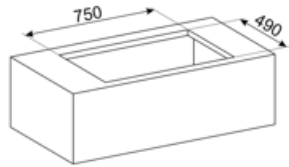
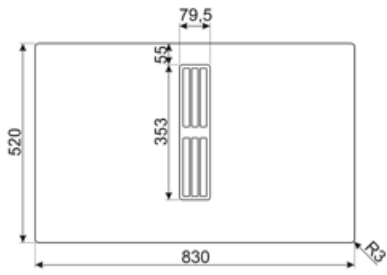
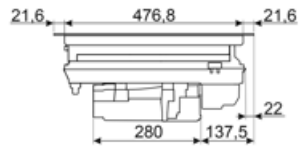
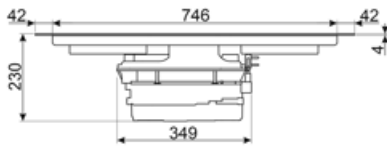
## Intensive speed

|                             |                       |
|-----------------------------|-----------------------|
| Extraction rate (IEC 61591) | 540 m <sup>3</sup> /h |
| Noise level IEC 60704-2-13  | 70 dBA                |
| Pressure                    | 625 Pa                |
| Power                       | 180 W                 |

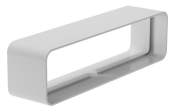
---

## Intensive Speed 2

|                            |                       |
|----------------------------|-----------------------|
| Extraction rate IEC 61591  | 630 m <sup>3</sup> /h |
| Noise level IEC 60704-2-13 | 73 dBA                |
| Pressure                   | 630 Pa                |
| Power                      | 220 W                 |



## Compatible Accessories



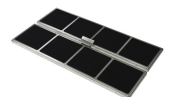
### CON60H

Flat duct connector for tubes 220\*60 mm. It help to connect more tubes of the kit KITEHOBD4



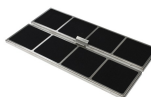
### CON90H

Connector for rectangular tubes high 90 mm. Size external 227\*94\*63 mm, internal 223\*90\*63 mm



### FLTHOBD2

n.2 high-performance carbon filters regenerable up to 8 times, washing it in the dishwasher and drying it at max 70° in the oven for max 120 minutes



### FLTSTDHOBD2



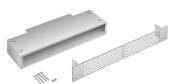
### GRI60H

Rectangular Louvred grille, external size 246\*80 mm and internal 226\*60\*50 mm



### GRILLPLATE

Universal griddle for induction, gas, ceramic and electric hobs. Non-stick surface ideal for cooking meat, cheese and vegetables. Dimensions: 410 x 240 mm.



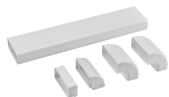
### GRIX6H

Stainless steel ventilation grille, size 426\*60 mm.



### KITDT50X10

tape for installation kit of HOBD\*2. 10 m lenght. 50 mm width.



### KITEHOBD10

Ducted kit for HOBD\*2 with tubes and curve high 10 mm.



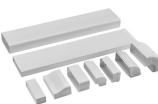
### KITEHOBD4

Filtering kit (lateral outlet) optional for Hobd: tube 1,5 mt and curve, high 60 mm



### KITREBFLOW

Rectangular grid used in ventilation system, 290 x 160 mm. Backdraft Damper for for regulating the air flow from the kitchen. Compatible for HOBD\*2 models.



### KITRHOBBD6

Mounting kit for recirculating installation: pipes and curves to be mounted in a plinth of minimum 6cm height. Available for HOBD\*2 series.

### KITSEBL











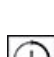





Squared grid used in ventilation system with backdraft Damper for regulating the air flow from the kitchen. Compatible for HOBD\*2 models.



### TPK

Stainless steel grill plate to cook Teppanyaki dishes

## Symbols glossary

|   |   |
|---|---|
|  <p>Power booster: option allows the zone to work at full power when very intense cooking is necessary.</p>   |  <p>Child lock: some models are fitted with a device to lock the programme/cycle so it cannot be accidentally changed.</p>   |
|  <p>The slider control panel allows you to adjust the power simply by passing your finger across the touch device.</p>  |  <p>This function allows you to keep cooked food warm without burner it</p>  |
|  <p>Multizone: allows several pans to be used at once, large or small, offering freedom of placement and greater flexibility</p>  |  <p>Overfill protection: The special overfill protection shuts down the stove in the presence of overflow of liquids.</p>  |
|  <p>All cooking zones can be reduced to the minimum power level, so the hob can be left unattended for a short period without food overcooking or burning. Then just press again this function, the previously set power levels can be reactivated.</p> |  <p>Quick selection, with one touch cooking begins at the highest level, then automatically reduces after time. Ideal for dishes that require quick boiling and then continued cooking without constant control (eg beef broth).</p> |
|  <p>Quick Start function: the chosen temperature is reached faster. The heating element works at maximum power until the right temperature is reached.</p>  |  <p>Indication of residual heat: After the glass ceramic hob is switched off the residual heat indicator shows which of the heating zones still remains hot. When the temperature drops below 60 ° C, the indicator goes out.</p>    |
|  <p>Time elapsed: shows how long the cooking zone has been in use.</p>  |  <p>Timer: All ceramic hobs have a timer which automatically ends cooking after a preset time.</p>   |
|  <p>Permanent auto pot detection</p>  |  <p>Min diameter pot detection of 9 cm</p>   |
|  <p>Possibility to set the maximum power absorption of the hob</p>  |  <p>Evolution Slider totally Back-lighted ghost effect</p>   |