

# HOB382N2

Product Family	Hob
Built-in	Ultra-low profile or Fully Flushed
Dimensions	83 cm
Power supply	Electric
Type	Induction with integrated hood
Extraction	Expulsion
Electronic control	Yes
EAN code	8017709359591
Energy efficiency class ( EEC)	A+



## Aesthetics



Aesthetics	Classic
Colour	Matte Black
Finishing	Glass
Material	Glass
Glass Type	Matte ceramic
Glass edge	Straight edge
Type of control setting	EVO Slider
Slider	Yes
Slider	White
Control knobs position	Front
Logo	Silk screen
Serigraphy colour	Grey

## Program / Functions



No. of induction cook zones	4
Time-setting options	Automatic switch-off
No. of cooking zones with booster	4
No. of Flexible zones	2
Main on/off switch	Yes
Power levels	9
Total no. of cook zones	4

## Options



<b>Multizone Option</b>	Yes	<b>Residual time indicator</b>	Yes
<b>Flexible Zone Type</b>	MultiZone	<b>Limited Power Consumption Mode</b>	Yes advance
<b>Standard cut out</b>	490x750 mm	<b>Limited Power Consumption Mode in W</b>	2800, 3500, 4500, 7400 W
<b>Keep warm automatic function</b>	Yes	<b>Show Room Demo Option</b>	Yes
<b>End cooking timer</b>	4	<b>Control Lock / Child Safety</b>	Yes
<b>Pause option</b>	Yes	<b>Cleaning option</b>	Yes
<b>Minute minder</b>	1	<b>Quick start</b>	Yes
<b>End of cooking acoustic alarm</b>	Yes	<b>Rapid level selection</b>	Yes

## Technical Features



Front left - Induction - single - 2.10 kW - Booster 3 kW - 21x19 cm  
 Rear left - Induction - single - 2.10 kW - Booster 3 kW - 21x19 cm  
 Rear right - 2.10 kW - Booster 3 kW - 21x19 cm  
 Front right - 2.10 kW - Booster 3 kW - 21x19 cm  
 Multizone left - Booster 3.70 kW - 39.0x21.0 cm  
 Multizone right - Booster 3.70 kW - 39.0x21.0 cm

<b>Automatic setting according to pan dimension</b>	Yes	<b>Automatic switch off when overflow</b>	Yes
<b>Automatic pan detection</b>	Yes, min 9 cm	<b>Residual heat indicator</b>	Yes
<b>Permanent Automatic Pot Detection with indication of the relative control</b>	Yes	<b>Protection against accidental start up</b>	Yes

## Accessories Included

Other accessories

## Electrical Connection

<b>Nominal power (W)</b>	7620 W	<b>Frequency (Hz)</b>	50/60 Hz
<b>Current</b>	33 A	<b>Power supply cable length</b>	120 cm
<b>Voltage (V)</b>	220-240 V	<b>Terminal Box Plug</b>	6 poles No
<b>Type of electric cable supplied</b>	Yes, Single and Double phase		

## Controls (hood)

<b>Hood control setting</b>	Touch control	<b>Display</b>	Yes
-----------------------------	---------------	----------------	-----

Led colour White

## Programs / Functions (hood)

Delay function	Yes	Hood time setting	Delay
No. of speeds	8	Other options	Kit for Recirculation and Extraction included
Intensive speed	2	Auto-Vent	yes

## Technical Features (Hood)

Free outlet maximum capacity	650 m <sup>3</sup> /h	Anti-grease filters	Stainless steel
Motor power	220 W	Charcoal filters included	YES, regenerable
No. of filters	1	Filter replacement indicator	Yes

## Performance / Energy Label (hood)

Fluid Dynamic Efficiency (FDE)	32,10	Airborne acoustical A-weighted sound Power Emission at minimum speed (SPEmin)	49 dBA
Fluid Dynamic Efficiency class (FDEC)	A	Airborne acoustical A-weighted sound Power Emission at maximum speed (SPEmax)	68 dBA
Lighting Efficiency (LE)	0,0 lux/W	Airborne acoustical A-weighted sound power emission at boost speed (SPEboost)	73 dBA
Lighting Efficiency Class (LEC)	NA	Time increase factor (F)	0,8
Grease Filtering Efficiency (GFE)	85,1 %	Energy Efficiency Index per first cavity	44,2
Grease Filtering Efficiency Class (GFEC)	B	Measured air flow rate at best efficiency point (Qbep)	320 m <sup>3</sup> /h
Air flow at mininum speed (Qmin)	230 m <sup>3</sup> /h	Measured air pressure at best efficiency point (Qbep)	502 Pa
AIR FLOW AT MAXIMUM SPEED (QMAX)	500 m <sup>3</sup> /h	Measured electric power input at best efficiency point (Wbep)	139 W
Air flow at boost speed (Qboost)	630 m <sup>3</sup> /h	Sound power level at highest setting (Lwa)	68 dBA

---

## Speed 1

Extraction rate IEC 61591	230 m <sup>3</sup> /h
Noise level IEC 60704-2-13	49 dBA
Pressure	280 Pa
Power	40 W

---

## Speed 2

Extraction rate IEC 61591	270 m <sup>3</sup> /h
Noise level IEC 60704-2-13	51 dBA
Pressure	370 Pa
Power	50 W

---

## Speed 3

Extraction rate IEC 61591	340 m <sup>3</sup> /h
Noise level IEC 60704-2-13	55 dBA
Pressure	400 Pa
Power	70 W

---

## Speed 4

Extraction rate IEC 61591	370 m <sup>3</sup> /h
Noise level IEC 60704-2-13	60 dBA
Pressure	450 Pa
Power	90 W

---

## Speed 5

Extraction rate IEC 61591	400 m <sup>3</sup> /h
Noise level IEC 60704-2-13	62 dBA
Pressure	500 Pa
Power	100 W

---

## Speed 6

Extraction rate IEC 61591	435 m <sup>3</sup> /h
Noise level IEC 60704-2-13	63 dBA
Pressure	550 Pa
Power	120 W

---

## Speed 7

Extraction rate IEC 61591	460 m <sup>3</sup> /h
Noise level IEC 60704-2-13	65 dBA
Pressure	600 Pa
Power	150 W

---

## Speed 8

Extraction rate IEC 61591	500 m <sup>3</sup> /h
Noise level IEC 60704-2-13	68 dBA
Pressure	620 Pa
Power	170 W

---

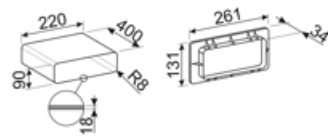
## Intensive speed

Extraction rate (IEC 61591)	540 m <sup>3</sup> /h
Noise level IEC 60704-2-13	70 dBA
Pressure	625 Pa
Power	180 W

---

## Intensive Speed 2

Extraction rate IEC 61591	630 m <sup>3</sup> /h
Noise level IEC 60704-2-13	73 dBA
Pressure	630 Pa
Power	220 W



## Compatible Accessories



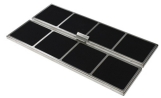
### CON60H

Flat duct connector for tubes 220\*60 mm. It helps to connect more tubes of the kit KITEHOBD4



### CON90H

Connector for rectangular tubes high 90 mm. Size external 227\*94\*63 mm, internal 223\*90\*63 mm



### FLTHOBD2

n.2 high-performance carbon filters regenerable up to 8 times, washing it in the dishwasher and drying it at max 70° in the oven for max 120 minutes



### FLTSTDHOBD2

Anti Odour Filter not regenerable as spare part, suitable for recirculation mode.



### GRI60H

Rectangular Louvred grille, external size 246\*80 mm and internal 226\*60\*50 mm



### GRILLPLATE

Universal griddle for induction, gas, ceramic and electric hobs. Non-stick surface ideal for cooking meat, cheese and vegetables. Dimensions: 410 x 240 mm.



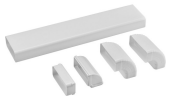
### GRIX6H

Stainless steel ventilation grille, size 426\*60 mm.



### KITDT50X10

tape for installation kit of HOBD\*2. 10 m lenght. 50 mm width.



### KITEHOBD10

Ducted kit for HOBD\*2 with tubes and curve high 10 mm.



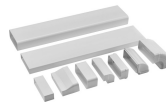
### KITEHOBD4

Filtering kit (lateral outlet) optional for Hobd: tube 1,5 mt and curve



### KITREBFLOW

Rectangular grid used in ventilation system. It regulates the air flow from the kitchen. Suitable for HOBD\*2 models.



### KITRHOB6


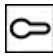
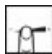




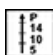


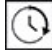





Mounting kit for recirculating installation: pipes and curves to be mounted in a plinth of minimum 6cm height. Available for HOBD\*2 series.



### KITSEBL

Squared grid used in ventilation system with backdraft Damper for regulating the air flow from the kitchen. Compatible for HOBD\*2 models.

## Symbols glossary

 <p>Power booster: option allows the zone to work at full power when very intense cooking is necessary.</p>	 <p>Child lock: some models are fitted with a device to lock the programme/cycle so it cannot be accidentally changed.</p>
 <p>The slider control panel allows you to adjust the power simply by passing your finger across the touch device.</p>	 <p>Keep warm function: Keep warm function keeps the cooked food heated. In this mode the heating zone operates at a minimum capacity for 120 minutes and then turns off automatically.</p>
 <p>Multizone: allows several pans to be used at once, large or small, offering freedom of placement and greater flexibility</p>	 <p>Overfill protection: The special overfill protection shuts down the stove in the presence of overflow of liquids.</p>
 <p>PAUSE_72dpi</p>	 <p>Quick selection, with one touch cooking begins at the highest level, then automatically reduces after time. Ideal for dishes that require quick boiling and then continued cooking without constant control (eg beef broth).</p>
 <p>Quick Start function: the chosen temperature is reached faster. The heating element works at maximum power until the right temperature is reached.</p>	 <p>Indication of residual heat: After the glass ceramic hob is switched off the residual heat indicator shows which of the heating zones still remains hot. When the temperature drops below 60 ° C, the indicator goes out.</p>
 <p>Time elapsed: shows how long the cooking zone has been in use.</p>	 <p>Timer: All ceramic hobs have a timer which automatically ends cooking after a preset time.</p>
 <p>Permanent auto pot detection</p>	 <p>Min diameter pot detection of 9 cm</p>
 <p>Possibility to set the maximum power absorption of the hob</p>	 <p>Evolution Slider totally Back-lighted ghost effect</p>