

HOB682D2

Product Family	Hob
Built-in	Ultra-low profile or Fully Flushed
Dimensions	83 cm
Power supply	Electric
Type	Induction with integrated hood
Extraction	Expulsion
Electronic control	Yes
EAN code	8017709341893
Energy efficiency class (EEC)	A+



Aesthetics



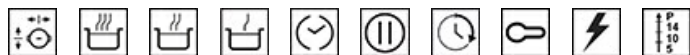
Aesthetics	Universal
Colour	Black
Finishing	Glass
Material	Glass
Glass Type	Ceramic
Glass edge	Straight edge
Pan stands	Stainless steel
Type of control setting	Multi Slider
Slider	Yes
Slider	White
Control knobs position	Front
Logo	Silk screen
Serigraphy colour	Grey

Program / Functions



No. of induction cook zones	4
Time-setting options	Automatic switch-off
No. of cooking zones with booster	4
No. of Flexible zones	2
Main on/off switch	Yes
Power levels	9
Total no. of cook zones	4

Options



Multizone Option	Yes	Pause option	Yes
Flexible Zone Type	MultiZone	Minute minder	1
Standard cut out	490x750 mm	End of cooking acoustic alarm	Yes
Simmering Function	Yes	Residual time indicator	Yes
Keep warm automatic function	Yes	Control Lock / Child Safety	Yes
Melting/Low temperature cooking function	Yes	Quick start	Yes
End cooking timer	4	Rapid level selection	Yes

Technical Features



Front left - Induction - Multizone - 2.10 kW - Booster 3.00 kW - 21.0x19.0 cm
Rear left - Induction - multizone - 2.10 kW - Booster 3.00 kW - 21.0x19.0 cm
Rear right - Induction - Multizone - 2.10 kW - Booster 3.00 kW - 21.0x19.0 cm
Front right - Induction - multizone - 2.10 kW - Booster 3.00 kW - 21.0x19.0 cm
Multizone left - Booster 3.70 kW - 46.0x21.0 cm
Multizone right - Booster 3.70 kW - 46.0x21.0 cm

Automatic setting according to pan dimension	Yes	Automatic switch off when overflow	Yes
Automatic pan detection	Yes, min 9 cm	Residual heat indicator	Yes
Permanent Automatic Pot Detection with indication of the relative control	Yes	Protection against accidental start up	Yes

Accessories Included

Other accessories	Filtering kit and charcoal filter included
--------------------------	--

Electrical Connection

Nominal power (W)	7620 W	Frequency (Hz)	50/60 Hz
Current	33 A	Power supply cable length	120 cm
Voltage (V)	220-240 V	Terminal Box	6 poles
Voltage 2 (V)	380-415 V	Plug	No
Type of electric cable supplied	Yes, Single and Double phase		

Controls (hood)

Hood control setting	Touch Capacitive	Display	Yes
Led colour	White		

Programs / Functions (hood)

Delay function	Yes	Intensive speed	2
No. of speeds	8	Auto-Vent	yes

Technical Features (Hood)

Free outlet maximum capacity	650 m³/h	Anti-grease filters	Stainless steel
Motor power	220 W	Charcoal filters included	YES, regenerable
No. of filters	1	Filter replacement indicator	Yes

Performance / Energy Label (hood)

Fluid Dynamic Efficiency (FDE)	32,10	Airbourne acoustical A-weighted sound Power Emission at minimum speed (SPEmin)	49 dBA
Fluid Dynamic Efficiency class (FDEC)	A	Airborne acoustical A-weighted sound Power Emission at maximum speed (SPEmax)	68 dBA
Lighting Efficiency (LE)	0,0 lux/W	Airbourne acoustical A-weighted sound power emission at boost speed (SPEboost)	73 dBA
Lighting Efficiency Class (LEC)	NA	Time increase factor (F)	0,8
Grease Filtering Efficiency (GFE)	85,1 %	Energy Efficiency Index per first cavity	44,2
Grease Filtering Efficiency Class (GFEC)	B	Measured air flow rate at best efficiency point (Qbep)	359 m³/h
Air flow at mininum speed (Qmin)	230 m³/h	Measured air pressure at best efficiency point (Qbep)	549 Pa
AIR FLOW AT MAXIMUM SPEED (QMAX)	500 m³/h	Measured electric power input at best efficiency point (Wbep)	139 W
Air flow at boost speed (Qboost)	630 m³/h	Sound power level at highest setting (Lwa)	68 dBA

Electrical Connections (hood)

Hood frequency	50-60 Hz
----------------	----------

Speed 1

Extraction rate IEC 61591	230 m³/h
Noise level IEC 60704-2-13	49 dBA
Pressure	280 Pa
Power	40 W

Speed 2

Extraction rate IEC 61591	270 m³/h
Noise level IEC 60704-2-13	51 dBA
Pressure	370 Pa
Power	50 W

Speed 3

Extraction rate IEC 61591	340 m³/h
Noise level IEC 60704-2-13	55 dBA
Pressure	450 Pa
Power	90 W

Speed 4

Extraction rate IEC 61591	370 m³/h
Noise level IEC 60704-2-13	60 dBA
Pressure	450 Pa
Power	90 W

Speed 5

Extraction rate IEC 61591	400 m³/h
Noise level IEC 60704-2-13	62 dBA
Pressure	500 Pa
Power	100 W

Speed 6

Extraction rate IEC 61591	435 m³/h
Noise level IEC 60704-2-13	63 dBA
Pressure	550 Pa
Power	120 W

Speed 7

Extraction rate IEC 61591	460 m³/h
Noise level IEC 60704-2-13	65 dBA
Pressure	600 Pa
Power	150 W

Speed 8

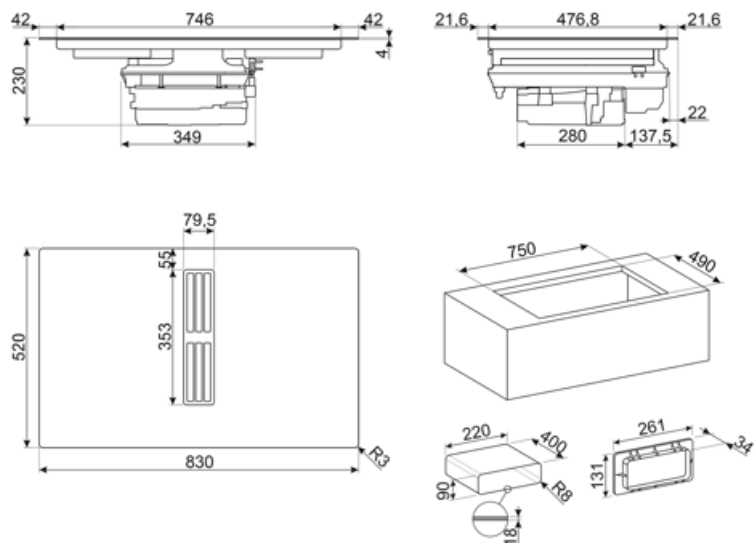
Extraction rate IEC 61591	500 m³/h
Noise level IEC 60704-2-13	68 dBA
Pressure	620 Pa
Power	170 W

Intensive speed

Extraction rate (IEC 61591)	540 m³/h
Noise level IEC 60704-2-13	70 dBA
Pressure	625 Pa
Power	180 W

Intensive Speed 2

Extraction rate IEC 61591	630 m³/h
Noise level IEC 60704-2-13	73 dBA
Pressure	630 Pa
Power	220 W



Compatible Accessories



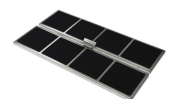
CON60H

Flat duct connector for tubes 220*60 mm. It helps to connect more tubes of the kit KITEHOB4



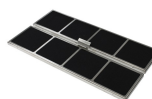
CON90H

Connector for rectangular tubes high 90 mm. Size external 227*94*63 mm, internal 223*90*63 mm



FLTHOBD2

n.2 high-performance carbon filters regenerable up to 8 times, washing it in the dishwasher and drying it at max 70° in the oven for max 120 minutes



FLTSTDHOB2

Anti Odour Filter not regenerable as spare part, suitable for recirculation mode.



GRI60H

Rectangular Louvred grille, external size 246*80 mm and internal 226*60*50 mm



GRILLPLATE

Universal griddle for induction, gas, ceramic and electric hobs. Non-stick surface ideal for cooking meat, cheese and vegetables. Dimensions: 410 x 240 mm.



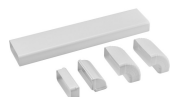
GRIX6H

Stainless steel ventilation grille, size 426*60 mm.



KITDT50X10

tape for installation kit of HOBD*2. 10 m lenght. 50 mm width.



KITEHOB4

Ducted kit for HOBD*2 with tubes and curve high 10 mm.



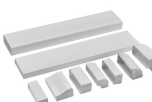
KITEHOB4

Filtering kit (lateral outlet) optional for Hobd: tube 1,5 mt and curve



KITREBFLOW

Rectangular grid used in ventilation system. It regulates the air flow from the kitchen. Suitable for HOBD*2 models.



KITRHOB6

Mounting kit for recirculating installation: pipes and curves to be mounted in a plinth of minimum 6cm height. Available for HOBD*2 series.

KITSEBL

Squared grid used in ventilation system with backdraft Damper for regulating the air flow from the kitchen. Compatible for HOBD*2 models.



RED60H


















Reducer from 90 to 60 mm suitable for rectangular tube of 220 mm. Size: 220x90x92 mm

TPKPLATE



Universal plate for induction, gas, ceramic and electric hobs. Non-stick surface ideal for cooking fish, eggs and vegetables. Dimensions: 410 X 240 mm.

Symbols glossary

	Permanent auto pot detection		Power booster: option allows the zone to work at full power when very intense cooking is necessary.
	Child lock: some models are fitted with a device to lock the programme/cycle so it cannot be accidentally changed.		Premium individual Slider control for each zone
	The slider control panel allows you to adjust the power simply by passing your finger across the touch device.		Keep warm function: Keep warm function keeps the cooked food heated. In this mode the heating zone operates at a minimum capacity for 120 minutes and then turns off automatically.
	Melting function, suitable for slowly melting delicate foods such as chocolate or butter.		Multizone: allows several pans to be used at once, large or small, offering freedom of placement and greater flexibility
	Overfill protection: The special overfill protection shuts down the stove in the presence of overflow of liquids.		Min diameter pot detection of 9 cm
	PAUSE_72dpi		Quick selection, with one touch cooking begins at the highest level, then automatically reduces after time. Ideal for dishes that require quick boiling and then continued cooking without constant control (eg beef broth).
	Quick Start function: the chosen temperature is reached faster. The heating element works at maximum power until the right temperature is reached.		Indication of residual heat: After the glass ceramic hob is switched off the residual heat indicator shows which of the heating zones still remains hot. When the temperature drops below 60 ° C, the indicator goes out.
	Simmering function: ideal for long-cooking recipes, preventing food from boiling over or sticking to the pan.		Time elapsed: shows how long the cooking zone has been in use.
	Timer: All ceramic hobs have a timer which automatically ends cooking after a preset time.		