

# K4610X

Product family	Professional hood
Subfamily	Condensation
Hood Type	Mounted on oven
Design	Angled
Tecnology	Suction and filtering hood
Extraction	Recirculation
Electronic control	Yes
Suitable for	Combined oven 5 trays GN1/1 ; Convection ovens 600x400 mm - GN1/1
Material	Stainless steel
Type of steel	Polished
Hood width	80 cm



## Aesthetics

Colour	Stainless steel	Logo	Embossed
Components finishing	Stainless steel		

## Controls

Control setting	Touch control back-lighted White	Led color	White
-----------------	-------------------------------------	-----------	-------

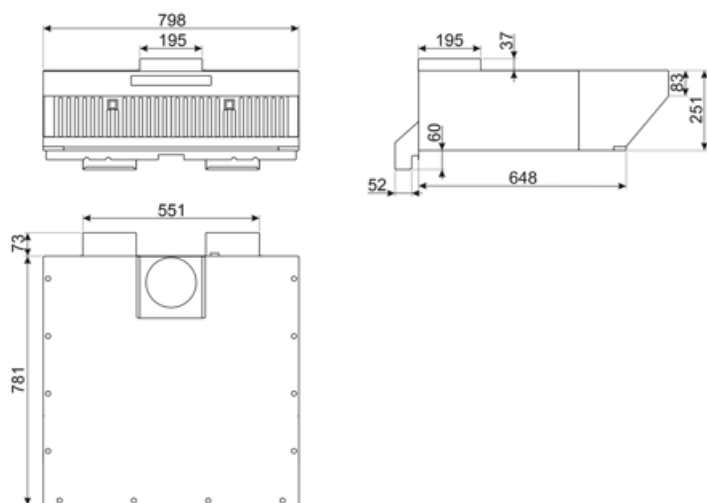
## Technical Features



No. of lights	1	Charcoal filters included	Yes
Light type	LED	No. of filters	2
Light Power	1,1 W	Filter replacement indicator	Yes
Dimmer mode	Yes	Vent outlet	150 mm
Free outlet maximum capacity	900 m³/h	Non return valve	Yes
Anti-grease filters	Buffle	Light color temperature scale (K)	4000 K
Motor power	330 W		

## Electrical Connection

Voltage	220-240 V	Power supply cable length	1500 mm
Frequency (Hz)	50-60 Hz		



## Logistic Information

---

<b>EAN code</b>	8017709314446	<b>Gross weigh</b>	24.230 kg
<b>Net weight</b>	19.810 kg		

## Compatible Accessories

---



### FLT6

Round Charcoal filters (kit 2 pieces)



### KITCMNKVX









Chimney Extension in Stainless Steel for hood KV\*series 300 mm\*200 mm + 500/850 mm



### KITALLFC

Universal Charcoal filter Stainless Steel AISI 304 The filter can be washed in dishwasher 50 °C (water and suitable detergent) and to dry it put in the oven 180°C 25 minutes

## Symbols glossary

	24h: When selected this function refreshes the air for c. 10 minutes every hour over a 24 hour period, at minimum speed and an imperceptible noise level.		Filters: Model has filters to help remove grease from the steam emanating from the pans during cooking.
	Switch off automatically: A special setting, to run after the end of cooking for a pre-set time and then switch off automatically.		Charcoal filters: Extracting through charcoal filters or directly to the exterior lessens strong cooking odours considerably.
	Dimmering Lights		Warning light(s): to advise when filters need changing.
	Lights: All cooker hoods feature lights to illuminate the cooking area or add to the ambience of the kitchen.		Intensive/turbo setting: when extra fast extraction is required.