

K510X

Product family	Hood
Product family	Hood
Hood Type	Mounted on oven
Design	Angled
Design	Chimney
Extraction	Recirculation
Electronic control	Yes
Suitable for	Combi steam oven 4 trays 600x400mm; Combined oven 10 GN1/1; Combined ovens 5 GN1/1
Material	Stainless steel
Type of steel	Brushed
EAN code	8017709333010
Hood width	80 cm



Aesthetics

Colour	Stainless steel	Logo	Embossed
Components finishing	Stainless steel		

Controls

Control setting	Soft touch	Led colour	White
-----------------	------------	------------	-------

Technical Features



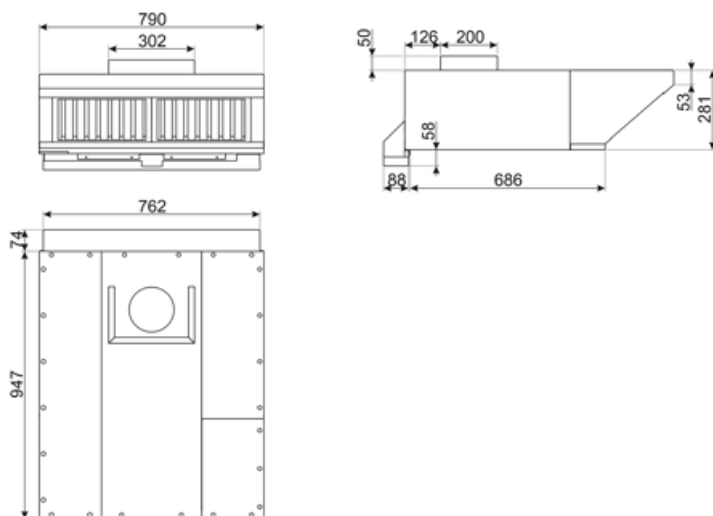
Free outlet maximum capacity	900 m³/h	Anti-grease filters	Flame retardant labyrinth filter st/steel AISI 304
Motor power	320 W	Vent outlet	150 mm
No. of filters	2	Non return valve	Yes

Electrical Connection

Voltage	220-240 V	Power supply cable length	2500 mm
Frequency (Hz)	50-60 Hz		

Optional accessories

Charcoal filter	FLT6
-----------------	------



Logistic Information

Width packed product 925 mm
Depth packed product 925 mm
Height packed product 370 mm

Packed product dimensions 370x925x925
Gross weight (kg) 24,230
Net weight 19,810 kg

Compatible Accessories

FLT6

Round Charcoal filters (kit 2 pieces)



Symbols glossary



Filters: Model has filters to help remove grease from the steam emanating from the pans during cooking.



Intensive/turbo setting: when extra fast extraction is required.