

# KDIAM90X


Product family	Hood
Hood Type	Integrated hood
Design	Fully integrated
Extraction	Extraction
Electronic control	Yes
Material	Stainless steel
Type of steel	Brushed
EAN code	8017709253851
Hood width	90 cm
Aesthetic	Universale
Colour	Stainless steel
Finishing	Satin
Logo	Embossed



## Controls

Control setting	Electronic buttons	Led color	White
-----------------	--------------------	-----------	-------

## Program / Functions

No. of speeds	3
Intensive speed	
Time-setting options	

## Technical Features



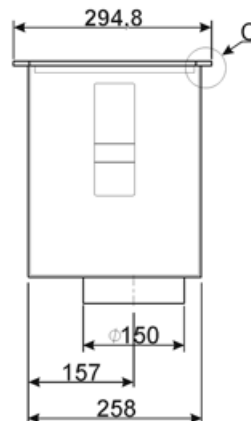
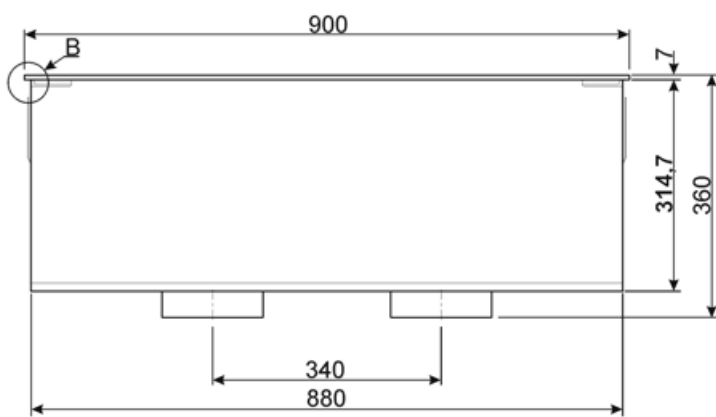
No. of lights	4	Anti-grease filters	Baffle
Light type	LED	Filter replacement indicator	Yes
Light Power	1 W	Vent outlet	150 mm
Light color temperature scale (°K)	3000 °K	Minimum distance from GAS hob	650 mm
Free outlet maximum capacity	1400 m³/h	Minimum distance from ELECTRIC hob	750 mm
Motor power	550 W	Non return valve	Yes
No. of filters	2		

	Extraction rate IEC 61591 [m³/h]	Noise level IEC 60704-2-13 [dBA]
Speed 1	552	46

Speed 2	950	63
Speed 3	1412	71
Intensive speed	1555	74

## Electrical Connection

Plug	Not present	Frequency (Hz)	50-60 Hz
Electrical connection rating	555 W	Power supply cable length	1500 mm
Voltage	220-240 V		

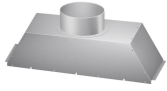


---

## Compatible Accessories

---

### AIRKITDIAM



air conveyor kit from the two hood motors in a single outlet with a diameter of 200 mm (the motors come out at 150 mm)

### FLT6

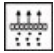






Round Charcoal filters (kit 2 pieces)

---

## Symbols glossary

---

- |  |   |   |  |
|--|---|---|--|
|  | Filters: Model has filters to help remove grease from the steam emanating from the pans during cooking. |  | Switch off automatically: A special setting, to run after the end of cooking for a pre-set time and then switch off automatically. |
|  | Warning light(s): to advise when filters need changing.   |  | Lights: All cooker hoods feature lights to illuminate the cooking area or add to the ambience of the kitchen.                      |
|  | Intensive/turbo setting: when extra fast extraction is required.  |   |  |