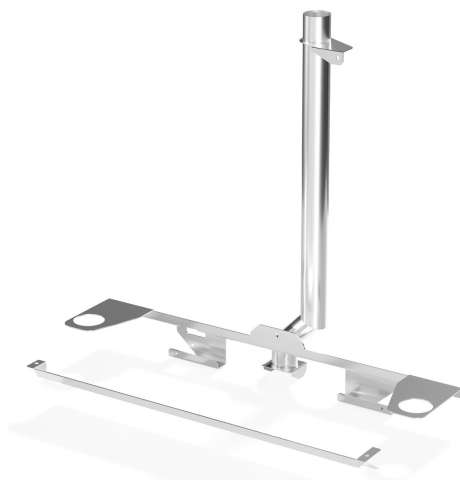


# KITSTCK55

Family	Professional oven accessories
Subfamily	Combined oven accessories
Type	Conjunction kit between 2 combined ovens
Net weight (kg)	3,800 kg
Suitable for	Combined ovens 5 GN1/1 ; Combined oven 4 trays 600x400 mm
Compliant oven models	Combi oven PO45LSE
EAN code	8017709329099

Conjunction kit between 2 stacked Galileo ovens (SPO4 or SPO5)



## Construction

---

Material	Stainless steel
----------	-----------------