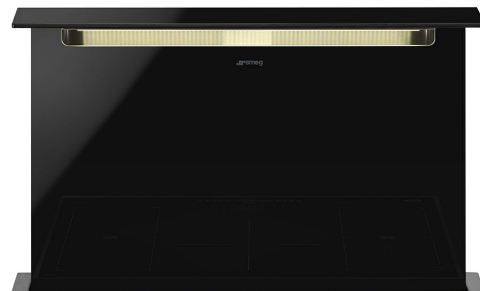


KSDD90VN-2



Product family	Hood
Tipo de Exaustor	Fully Integrated hood
Design	Fully integrated
Extraction	Extraction
Electronic control	Yes
Perimeter extraction	Yes
Material	Stainless Steel + Glass
Type of steel	Brushed
EAN code	8017709239336
Aesthetic	Dolce Stil Novo
Colour	Black
Acabamento	Glass
Glass Type	Black
Cor da serigrafia	Serigrafia em branco
Logotipo	Logotipo serigrafado



Controls

Control setting	Remote Control
-----------------	----------------

Program / Functions

No. of speeds	3
Intensive speed	 BOOST
24h air filter function	No
Other functions	No
Time-setting options	
Other options	No
Ventilação automática	No

Technical Features



Hood without motor	No	Motor power	285 W
Remote motor	Included	No. of filters	2
No. of lights	1	Anti-grease filters	stainless steel 7 layer
Light type	LED	Charcoal filters included	No
Light Power	6 W	Filter replacement indicator	No
Dimmer mode	No	Vent outlet	150 mm
Escala de temperatura de cor clara (°K)	4000 °K	Non return valve	Yes

Free outlet maximum capacity 800 m³/h

	Extraction rate IEC 61591 [m ³ /h]	Noise level IEC 60704-2-13 [dBA]
Speed 1	230	42
Speed 2	322	50
Speed 3	500	59
Intensive speed	730	66

Accessories Included

Remote control	Yes	Tube reduction	No
Sliding door	Yes		

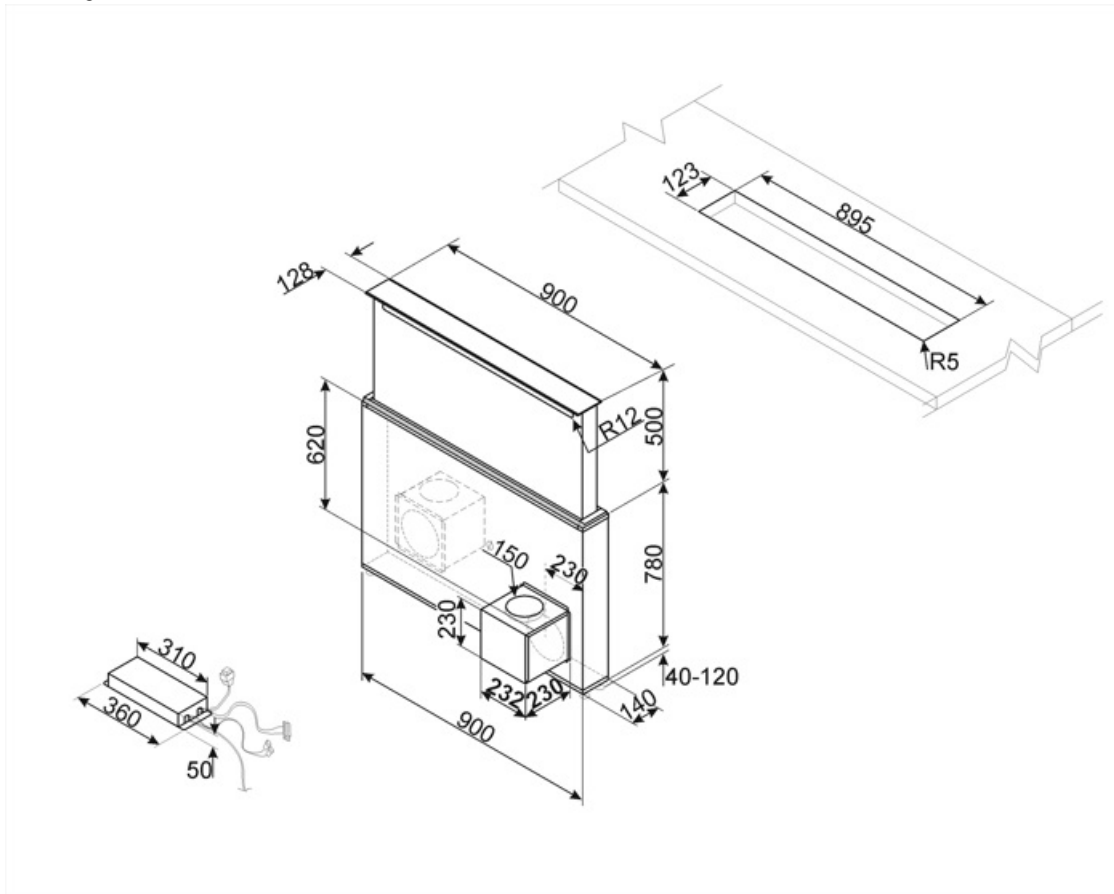
Performance / Energy Label



Consumo anual de energía (CAE exaustor)	60 kWh/a	Airbourne acoustical A-weighted sound Power Emission at minimum speed (SPEmin)	40 dBA
Energy efficiency class (EEC)	A	Airborne acoustical A-weighted sound Power Emission at maximum speed (SPEmax)	57 dBA
Fluid Dynamic Efficiency (FDE)	29,5	Airbourne acoustical A-weighted sound power emission at boost speed (SPEboost)	65 dBA
Fluid Dynamic Efficiency class (FDEC)	A	Time increase factor (F)	1,00
Lighting Efficiency (LE)	15,0 lux/W	Energy Efficiency Index	53,1
Lighting Efficiency Class (LEC)	D	Measured air flow rate at best efficiency point (Qbep)	349 m ³ /h
Grease Filtering Efficiency (GFE)	38,9 %	Measured air pressure at best efficiency point (Pbep)	464 Pa
Grease Filtering Efficiency Class (GFEC)	G	Measured electric power input at best efficiency point (Wbep)	147 W
Air flow at minimum speed (Qmin)	213 m ³ /h	Nominal Power consumption of the light system (WL)	6 W
Air flow at maximum speed (Qmax)	448 m ³ /h	Average illumination of the light on the cooking surface (Emiddle)	253 lux
Air flow at boost speed (Qboost)	724 m ³ /h	Sound power level at highest setting (Lwa)	57 dBA

Electrical Connection

Plug	No	Frequency (Hz)	50-60 Hz
Electrical connection rating	292 W	Comprimento do cabo de alimentação	1000 mm
Voltage	220-240 V		



Symbols glossary



Filtros: O modelo tem filtros para ajudar a remover a graxa do vapor que emana das panelas durante o cozimento.



Desligar automaticamente: Uma configuração especial, para ser executada após o final do cozimento por um tempo pré-definido e, em seguida, desligar automaticamente.



R: Desempenho de secagem do produto, medido de A++ a D/G, dependendo da família de produtos



Luzes: Todos os exaustores possuem luzes para iluminar a área de cozinhar ou adicionar ao ambiente da cozinha.



Painéis de extração de perímetro: muito eficiente e ajuda na redução de ruído.



Configuração intensiva/turbo: quando a extração extra rápida é necessária.

Benefit (TT)

Perimetral aspiration

Optimized extraction through the perimeter aspiration system

Perimeter aspiration enhances extraction efficiency by directing vapors along the edges of the panel beneath the filters, optimizing air capture

Dimmering & Tunable lights

Customized lighting with LED lights featuring adjustable intensity and color temperature, from warm to cool tones