

# KTS75SCE2



Product family	Hood
Tipo de Exaustor	Decorative wall hood
Design	Angled
Extraction	Extraction
Electronic control	Yes
Perimeter extraction	No
Material	Stainless steel
Type of steel	Brushed
EAN code	8017709257262
Aesthetic	Linea
Colour	Stainless steel
Acabamento	Satin
Glass Type	Stopsol
Logotipo	Logotipo serigrafado



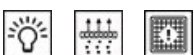
## Controls

Control setting	Electronic buttons	Display	No
Led color	White		

## Program / Functions

No. of speeds	3
Intensive speed	
24h air filter function	No
Other functions	No
Time-setting options	
Other options	No
Ventilação automática	No

## Technical Features



Hood without motor	No	No. of filters	1
Remote motor	No	Anti-grease filters	Stainless steel
No. of lights	2	Charcoal filters included	No
Light type	LED	Filter replacement indicator	Yes
Light Power	1 W	Vent outlet	150 mm
Dimmer mode	No	Minimum distance from GAS hob	427 mm
Escala de temperatura de cor clara (°K)	4000 °K		

Free outlet maximum capacity	750 m <sup>3</sup> /h	Minimum distance from ELECTRIC hob	427 mm
Motor power	275 W	Non return valve	Yes

	Extraction rate IEC 61591 [m <sup>3</sup> /h]	Noise level IEC 60704-2-13 [dBA]
Speed 1	278	56
Speed 2	303	63
Speed 3	549	65
Intensive speed	714	72

## Accessories Included

Remote control	No	Tube reduction	No
Sliding door	No		

## Performance / Energy Label



Consumo anual de energía (CAE exaustor)	50 kWh/a	Airborne acoustical A-weighted sound Power Emission at maximum speed (SPEmax)	65 dBA
Energy efficiency class (EEC)	A	Airbourne acoustical A-weighted sound power emission at boost speed (SPEboost)	72 dBA
Fluid Dynamic Efficiency (FDE)	30.4	Power consumption in stand-by mode (Ps)	0.49 W
Fluid Dynamic Efficiency class (FDEC)	A	Time increase factor (F)	0.9
Lighting Efficiency (LE)	103.2 lux/W	Energy Efficiency Index	51.6
Lighting Efficiency Class (LEC)	A	Measured air flow rate at best efficiency point (Qbep)	364 m <sup>3</sup> /h
Grease Filtering Efficiency (GFE)	62.6 %	Measured air pressure at best efficiency point (Pbep)	437 Pa
Grease Filtering Efficiency Class (GFEC)	E	Measured electric power input at best efficiency point (Wbep)	146 W
Air flow at minumum speed (Qmin)	278 m <sup>3</sup> /h	Nominal Power consumption of the light system (WL)	2 W
Air flow at maximum speed (Qmax)	549 m <sup>3</sup> /h	Average illumination of the light on the cooking surface (Emiddle)	227 lux
Air flow at boost speed (Qboost)	714 m <sup>3</sup> /h	Sound power level at highest setting (Lwa)	65 dBA
Airbourne acoustical A-weighted sound Power Emission at minimum speed (SPEmin)	56 dBA		

## Electrical Connection

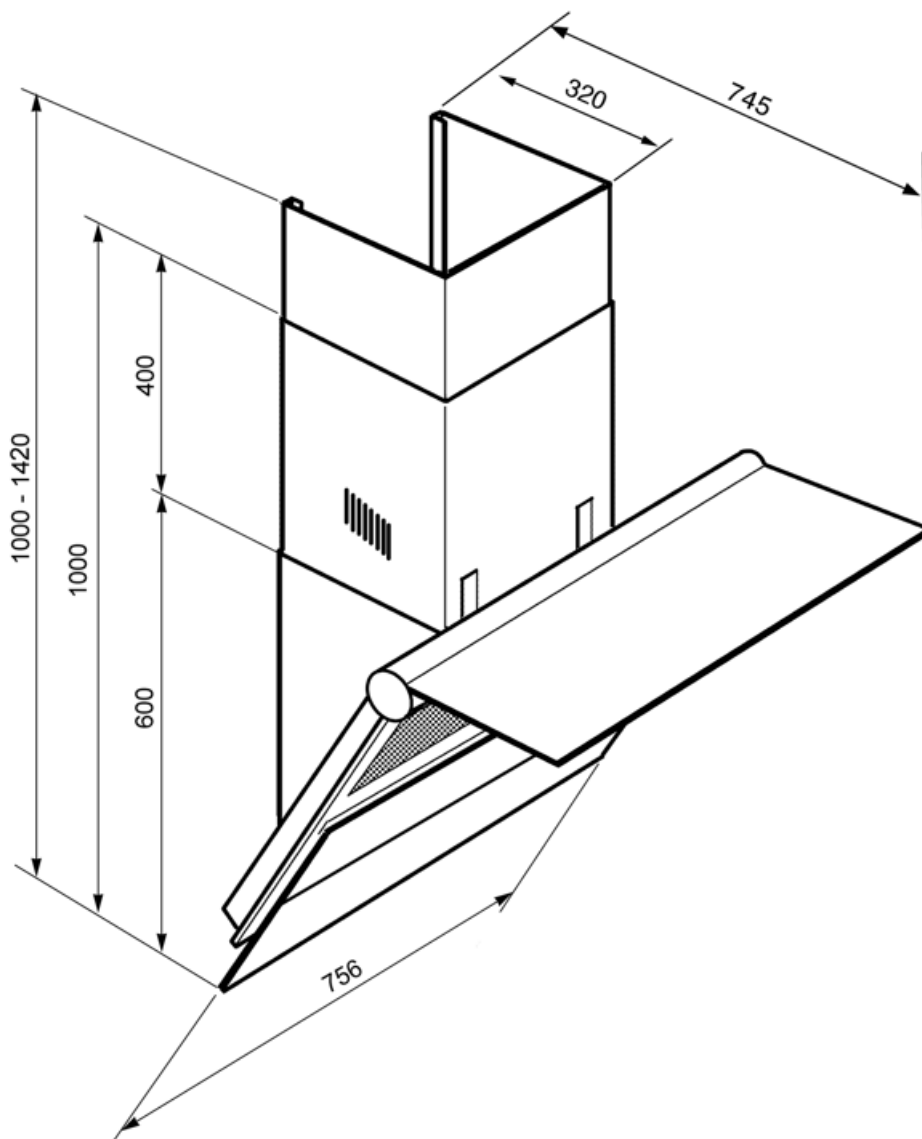
Plug	No	Frequency (Hz)	50-60 Hz
Electrical connection rating	278 W	Comprimento do cabo de alimentação	1000 mm
Voltage	220-240 V		

## Also available

Outras cores disponíveis Branca, Preta

Códigos das outras cores disponíveis

KTS75SE2 - KTS75BCE2 - KTS75NCE2



---

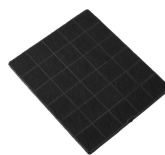
## Compatible Accessories

---



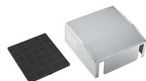
### KITALLFC

Filtro de carvão universal Aço inoxidável AISI 304 O filtro pode ser lavado na máquina lava-louça a 50 °C (água e detergente adequado) e para secar colocar no forno 180°C 25 minutos



### KITFC906

Kit filtro de carvão 1 peça



### KITFTS

Caixa de aço inoxidável + Kit filtro de carvão 1 peça

---

## Symbols glossary

---



Filtros: O modelo tem filtros para ajudar a remover a graxa do vapor que emana das panelas durante o cozimento.



Desligar automaticamente: Uma configuração especial, para ser executada após o final do cozimento por um tempo pré-definido e, em seguida, desligar automaticamente.



R: Desempenho de secagem do produto, medido de A++ a D/G, dependendo da família de produtos



Luz(s) de aviso: para avisar quando os filtros precisam ser trocados.



Luzes: Todos os exaustores possuem luzes para iluminar a área de cozinhar ou adicionar ao ambiente da cozinha.



Configuração intensiva/turbo: quando a extração extra rápida é necessária.