

KV90XE



Product family	Hood
Tipo de Exaustor	Decorative wall hood
Design	Curved
Extraction	Extraction
Electronic control	Yes
Perimeter extraction	No
Material	Glass
Type of steel	Brushed
EAN code	8017709206116
Aesthetic	Universal
Colour	Stainless steel
Acabamento	Glass
Glass Type	Clear
Logotipo	Logotipo embutido



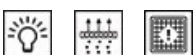
Controls

Control setting	Electronic buttons	Display	No
Led color	White		

Program / Functions

No. of speeds	3
Intensive speed	
24h air filter function	No
Other functions	No
Time-setting options	
Other options	No
Ventilação automática	No

Technical Features



Hood without motor	No	Motor power	278 W
Remote motor	No	No. of filters	2
No. of lights	2	Anti-grease filters	Aluminium
Light type	LED	Charcoal filters included	No
Light Power	1 W	Filter replacement indicator	Yes
Dimmer mode	No	Vent outlet	150 mm
Escala de temperatura de cor clara (°K)	4000 °K	Non return valve	Yes

Free outlet maximum capacity 780 m³/h

	Extraction rate IEC 61591 [m ³ /h]	Noise level IEC 60704-2-13 [dBA]
Speed 1	313	52
Speed 2	419	59
Speed 3	535	64
Intensive speed	764	71

Accessories Included

Remote control No Tube reduction Yes

Performance / Energy Label



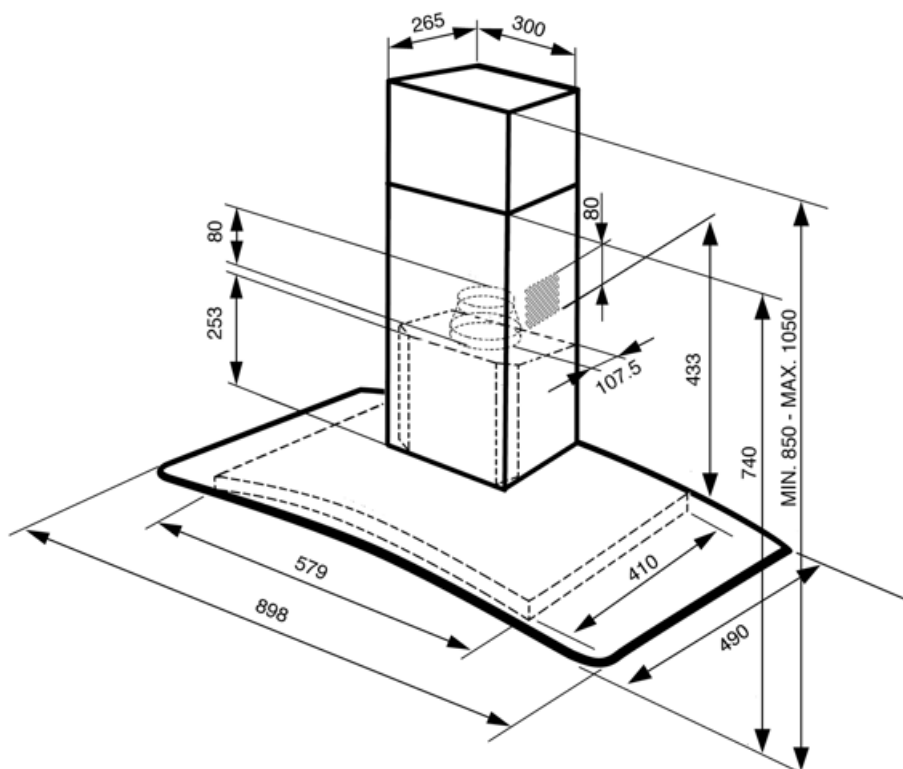
Consumo anual de energía (CAE exaustor)	65 kWh/a	Airbourne acoustical A-weighted sound Power Emission at minimum speed (SPEmin)	52 dBA
Energy efficiency class (EEC)	B	Airborne acoustical A-weighted sound Power Emission at maximum speed (SPEmax)	64 dBA
Fluid Dynamic Efficiency (FDE)	27,5	Airbourne acoustical A-weighted sound power emission at boost speed (SPEboost)	71 dBA
Fluid Dynamic Efficiency class (FDEC)	B	Power Consumption in Off mode (Po)	0,49 W
Lighting Efficiency (LE)	118,6 lux/W	Time increase factor (F)	1,00
Lighting Efficiency Class (LEC)	A	Measured air flow rate at best efficiency point (Qbep)	406 m ³ /h
Grease Filtering Efficiency (GFE)	80,2 %	Measured air pressure at best efficiency point (Pbep)	426 Pa
Grease Filtering Efficiency Class (GFEC)	C	Measured electric power input at best efficiency point (Wbep)	174 W
Air flow at mininum speed (Qmin)	313 m ³ /h	Nominal Power consumption of the light system (WL)	2 W
Air flow at maximum speed (Qmax)	535 m ³ /h	Average illumination of the light on the cooking surface (Emiddle)	261 lux
Air flow at boost speed (Qboost)	764 m ³ /h	Sound power level at highest setting (Lwa)	64 dBA

Electrical Connection

Plug	No	Frequency (Hz)	50-60 Hz
Electrical connection rating	278 W	Comprimento do cabo de alimentação	1000 mm
Voltage	220-240 V		

Optional accessories

Charcoal filter	KITFC161	Non return valve	No
Remote control	No	Kit with aesthetic components	No
Chimney extension	No	Diffuser kit	No
Vent outlet	No		

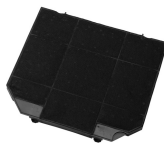


Compatible Accessories



KITALLFC

Filtro de carvão universal Aço inoxidável AISI 304 O filtro pode ser lavado na máquina lava-louça a 50 °C (água e detergente adequado) e para secar colocar no forno 180°C 25 minutos



KITFC161

Kit de filtros de carvão 2 peças

Symbols glossary



Filtros: O modelo tem filtros para ajudar a remover a graxa do vapor que emana das panelas durante o cozimento.



Luzes: Todos os exaustores possuem luzes para iluminar a área de cozinhar ou adicionar ao ambiente da cozinha.



Desligar automaticamente: Uma configuração especial, para ser executada após o final do cozimento por um tempo pré-definido e, em seguida, desligar automaticamente.



Luz(s) de aviso: para avisar quando os filtros precisam ser trocados.



Configuração intensiva/turbo: quando a extração extra rápida é necessária.