

LGR116-2

| | |
|---------------|-----------------|
| Sink material | Stainless steel |
| Type | Welded sink |
| No. of bowls | 2 |
| Drainer | Reversible |
| EAN code | 8017709304195 |



Aesthetics



| | | | |
|-----------|-----------------|----------------------------|-------------------|
| Aesthetic | Universale | Building in type | Ultra-low profile |
| Colour | Stainless steel | Logo | Embossed |
| Finishing | Brushed | Tap hole / precut tap hole | 2 Tapholes |
| Series | Alba | | |

| | Bowl type RH | Bowl thickness (mm) | Bowl dimensions, WxDxH (mm) | Bowl depth (mm) | Radius corner right bowl (mm) | Overflow LH bowl | Strainer position | Strainer dimension |
|---------|--------------|---------------------|-----------------------------|-----------------|-------------------------------|------------------|-------------------|--------------------|
| RH Bowl | Traditional | 0.7 | 300 x 400 x 210 | 210 | 80 | | Wall position | 3.5" |
| LH Bowl | Traditional | 0.7 | 450 x 400 x 210 | 210 | 80 | Yes, traditional | Wall position | 3.5" |

Technical Features

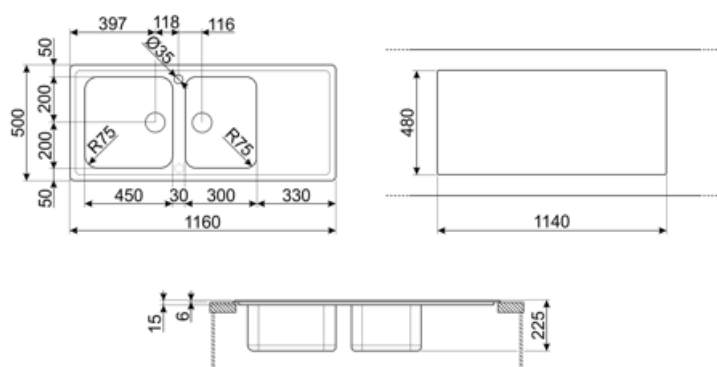


| | | | |
|--------------------------------|-----------------|---------------------|---------------|
| Frame thickness | 0.7 mm | Popup command | Yes, double |
| Frame depth (mm) | 13 | Popup command type | Round |
| Dimensions of the product (mm) | 223x1160x500 mm | Dividing wall width | 30 mm |
| Cutout dimension topmount (mm) | 1140 x 480 mm | Drainer inclination | 2 ° |
| Height from kitchen top | 6 mm | Gasket type | Sealing paste |
| Base unit size | 90 cm | No. of clips | 10 |
| | | Type of clips | Standard |

| | |
|-------------------|-------|
| Tap hole | 2 |
| Tap hole diameter | 35 mm |

Accessories included

| | |
|------------------------------|--|
| Accessories for installation | Strainer, Savespace siphon with dishwasher outlet connection, Fixing clips, Gasket, Automatic pop - up with round rotary control |
|------------------------------|--|



Compatible Accessories



3713

Siphon double bowls sinks (dishwasher connection included)



CB28QU

Single HPL chopping board for minimum radius, oak, measures 280 x 418 H 12 mm



COL19H

St/Steel colander to fit MINIMUM radius mm bowl, measures 200 x 410 x 100 mm



DB34

St/steel drain basket to fit STD radius 340 x 400 bowl, 180 mm depth



KITFD075

Waste disposal 0,75 HP, Motor: 1/2 horsepower, Fits all sinks with 3 1/2" waste outlet



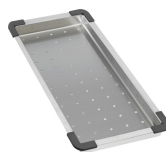
KITSLTRND2

2 Bowls automatic Rondò pop up waste kit with rectangular overflow and round knob



CB25MN

Single HPE chopping board to fit minimum radius bowls, black matt, measures 250 x 410 H 12 mm, dishwasher safe



COL19

St/Steel colander to fit MINIMUM radius mm bowl, measures 200 x 410 x 26 mm



COL36

St/steel colander for MINIMUM radius bowls, measures 370 x 410 x 30 mm



KITFD050

Waste disposal 0,5 HP, Motor: 1/2 horsepower, Fits all sinks with 3 1/2" waste outlet



KITFD100

Waste disposal 1 HP, Motor: 1/2 horsepower, Fits all sinks with 3 1/2" waste outlet



STABMIX

Tap stabiliser

Symbols glossary



Cupboard width required for sink installation.



Sink depth - depending on the model, the depth can be from 13 to 24,5.



Ultra-low profile: Installation of product with flat edge - height of 1 mm.



Thanks to the double tap hole, most of our sinks are easily reversible, giving you the flexibility to make any type of kitchen composition.