


LTS1163D2

Sink material	Stainless steel
Type	Welded sink
No. of bowls	2
Drainer	Right
EAN code	8017709128098

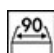


Aesthetics

	Aesthetic	Universale	Building in type	Ultra-low profile
	Series	Tratto	Logo	Embossed
	Colour	Stainless steel	Half bowl cup drainer	Yes
	Finishing	Brushed	Tap hole / precut tap hole	1 Tap hole

	Bowl type RH	Bowl thickness (mm)	Bowl dimensions, WxDxH (mm)	Bowl depth (mm)	Radius corner right bowl (mm)	Overflow LH bowl	Strainer position	Strainer dimension
RH Bowl	Traditional	0.7	400 x 300 x 210	210	80		Wall position	3.5"
LH Bowl	Traditional	0.7	400 x 450 x 210	210	80	Yes, traditional	Wall position	3.5"

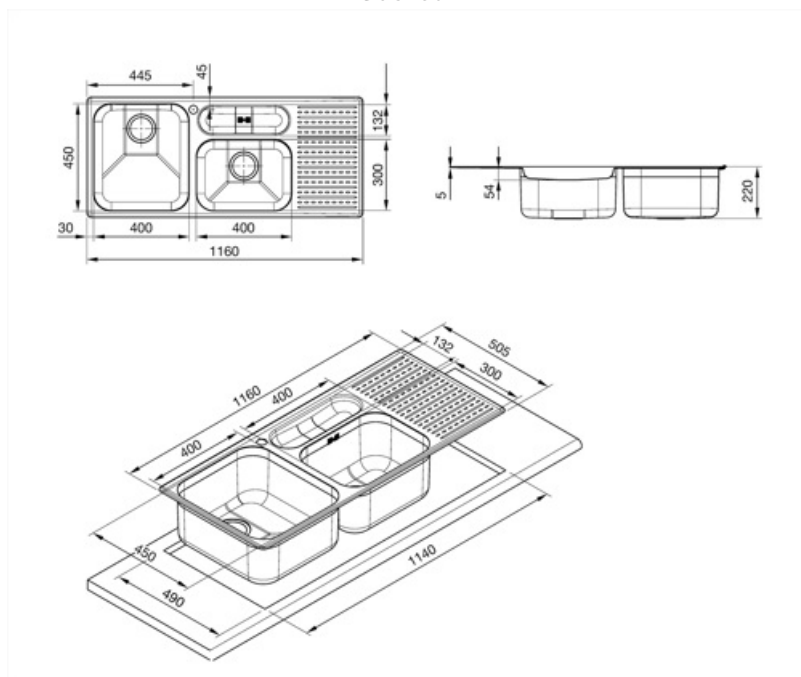
Technical Features

	Frame thickness	0,7 mm	Tap hole	1
	Frame depth (mm)	10	Dividing wall width	30 mm
	Dimensions of the product (mm)	220x1160x505 mm	Drainer inclination	2 °
	Cutout dimension topmount (mm)	1140 x 480 mm	Gasket type	Sealing paste
			No. of clips	12
			Type of clips	Turning clip

Undermount cutout radius	15 mm
Height from kitchen top	6 mm
Base unit size	90 cm

Accessories included

Accessories for installation	Strainer, Savespace siphon with dishwasher outlet connection, Fixing clips, Gasket
------------------------------	--



Compatible Accessories



KITFD050

Waste disposal 0,5 HP, Motor: 1/2 horsepower, Fits all sinks with 3 1/2" waste outlet



KITFD100

Waste disposal 1 HP, Motor: 1/2 horsepower, Fits all sinks with 3 1/2" waste outlet



KITFD075

Waste disposal 0,75 HP, Motor: 1/2 horsepower, Fits all sinks with 3 1/2" waste outlet



STABMIX

Tap stabiliser

Symbols glossary



Cupboard width required for sink installation



Sink depth - depending on the model, the depth can be from 13 to 24,5



Ultra-low profile: Installation of product with flat edge - height of 1 mm.

Benefit (TT)

Two bowls

Two bowls for greater versatility and dual functionality

Drainer

The drawer allows dishes, cutlery and kitchen utensils to be placed directly on the sink after washing: excess water can drain into the sink, allowing for natural drying

Tap hole

Possibility of having the tap hole for direct installation of the tap on the sink, for a larger and neater surface area