

# LTS1163S2

Sink material	Stainless steel
Type	Welded sink
No. of bowls	2
Drainer	Left
EAN code	8017709128104



## Aesthetics



Aesthetic	Universale	Building in type	Ultra-low profile
Series	Tratto	Logo	Embossed
Colour	Stainless steel	Half bowl cup drainer	Yes
Finishing	Brushed	Tap hole / precut tap hole	1 Tap hole

	Bowl type RH	Bowl thickness (mm)	Bowl dimensions, WxDxH (mm)	Bowl depth (mm)	Radius corner right bowl (mm)	Overflow	Strainer position	Strainer dimension
RH Bowl	Traditional	0.7	400 x 450 x 210	210	80	Yes, traditional	Wall position	3.5"
LH Bowl	Traditional	0.7	400 x 300 x 210	210	80		Wall position	3.5"

## Technical Features



Frame thickness	0.7 mm	Tap hole	1
Frame depth (mm)	10	Dividing wall width	30 mm
Dimensions of the product (mm)	220x1160x505 mm	Drainer inclination	2 °
Cutout dimension topmount (mm)	1140 x 480 mm	Gasket type	Sealing paste
		No. of clips	12
		Type of clips	Turning clip

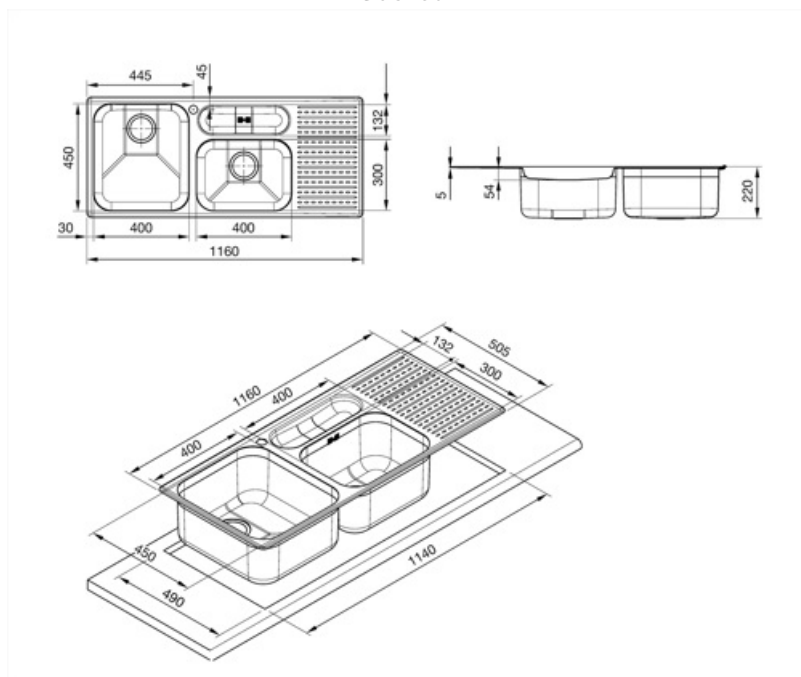
---

Undermount cutout radius	15 mm
Height from kitchen top	6 mm
Base unit size	90 cm

## Accessories included

---

Accessories for installation	Strainer, Savespace siphon with dishwasher outlet connection, Fixing clips, Gasket
------------------------------	--



---

## Compatible Accessories

---



### **KITFD050**

Waste disposal 0,5 HP, Motor: 1/2 horsepower, Fits all sinks with 3 1/2" waste outlet



### **KITFD100**

Waste disposal 1 HP, Motor: 1/2 horsepower, Fits all sinks with 3 1/2" waste outlet



### **KITFD075**

Waste disposal 0,75 HP, Motor: 1/2 horsepower, Fits all sinks with 3 1/2" waste outlet



### **STABMIX**

Tap stabiliser

---

## Symbols glossary

---



Cupboard width required for sink installation



Sink depth - depending on the model, the depth can be from 13 to 24,5



Ultra-low profile: Installation of product with flat edge - height of 1 mm.

---

## Benefit (TT)

---

### **Two bowls**

Two bowls for greater versatility and dual functionality

### **Drainer**

The drawer allows dishes, cutlery and kitchen utensils to be placed directly on the sink after washing: excess water can drain into the sink, allowing for natural drying

### **Tap hole**

Possibility of having the tap hole for direct installation of the tap on the sink, for a larger and neater surface area