

LYP792

Sink material	Stainless steel
Type	Monoblock sink
No. of bowls	2
EAN code	8017709251604



Aesthetics



Aesthetic	Universale	Building in type	Standard
Series	Omni	Logo	Embossed
Colour	Stainless steel	Tap hole / precut tap hole	1 Tap hole
Finishing	Pre-polished		

	Bowl type RH	Bowl thickness (mm)	Bowl dimensions, WxDxH (mm)	Bowl depth (mm)	Radius corner right bowl (mm)	Overflow	Strainer position	Strainer dimension
RH Bowl	Traditional	0.6	330 * 370 * 160	160	90	Yes, traditional	Side bowl	3.5"
LH Bowl	Traditional	0.6	330 * 370 * 160	160	90		Side bowl	3.5"

Technical Features

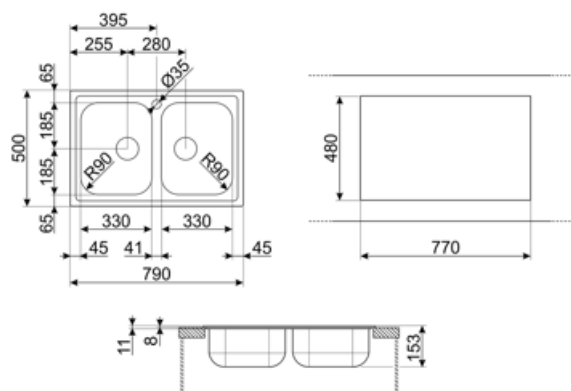


Frame thickness	0,6 mm	Tap hole	1
Frame depth (mm)	8	Tap hole diameter	35 mm
Dimensions of the product (mm)	160x790x500 mm	Dividing wall width	40 mm
Cutout dimension topmount (mm)	770 x 480 mm	Gasket type	Sealing paste
		No. of clips	8
		Type of clips	Standard
Undermount cutout radius	10 mm		

Height from kitchen top 8 mm
Base unit size 80 cm

Accessories included

Accessories for installation
Strainer, Siphon with dishwasher outlet connection, Fixing clips, Gasket



Compatible Accessories



3713

Siphon double bowls sinks (dishwasher connection included)



KITFD075

Waste disposal 0,75 HP, Motor: 1/2 horsepower, Fits all sinks with 3 1/2" waste outlet



RND2V

2 Bowls standard Rondò waste kit with rectangular overflow



KITFD050

Waste disposal 0,5 HP, Motor: 1/2 horsepower, Fits all sinks with 3 1/2" waste outlet



KITFD100

Waste disposal 1 HP, Motor: 1/2 horsepower, Fits all sinks with 3 1/2" waste outlet



STABMIX

Tap stabiliser

Symbols glossary



Cupboard width required for sink installation



Sink depth - depending on the model, the depth can be from 13 to 24,5



Standard installation: Traditional installation in tabletop, suitable for any kitchen sets

Benefit (TT)

Two bowls

Two bowls for greater versatility and dual functionality

Tap hole

Possibility of having the tap hole for direct installation of the tap on the sink, for a larger and neater surface area