

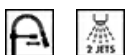
## MIDR55CR



Família	Misturadora
Material da misturadora	Bronze
Jato orientável	Sim
Rotação	180 °



## Design



Design	Universal	Tipo de jato	Com duche orientável
Cor	Cromado	Nº de jatos	2 jatos
Acabamentos	Polido	Filtro difusor	Sim
Spout type	Spring spout	Tubos flexíveis	2
Tipo	Semi-professional single lever		

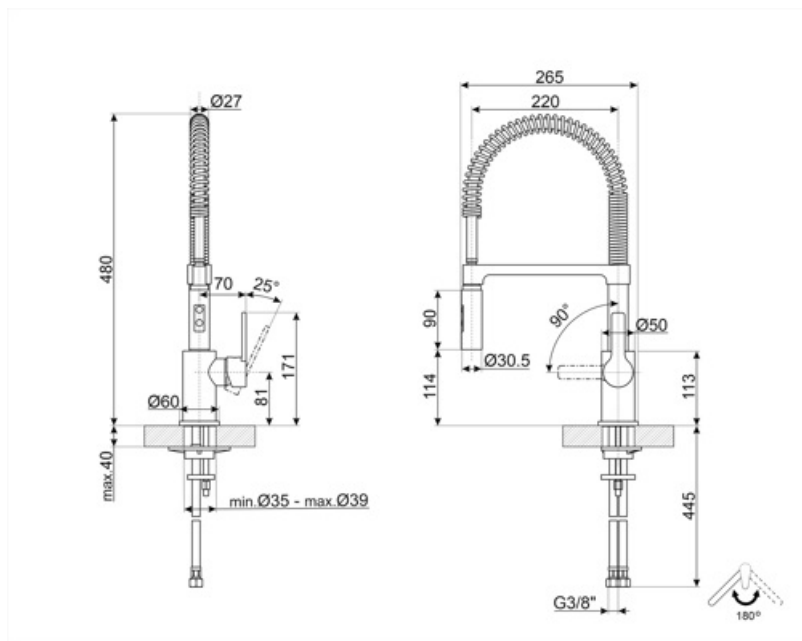
## Especificações técnicas



Sistemas	ESC para poupar energia, WSC para poupar água	Pressão mínima	1 bar
Comprimento dos tubos flexíveis	500 mm	Pressão ideal	3 bar
Conexões de tubos flexíveis	3/8 "	Water production (l/min)	12 l
Cartucho	35 Ø	Ø do furo da misturadora	35 mm
Pressão máxima	5 bar		

## Dados de logística

Altura	480 mm
--------	--------



---

## Not included accessories

---








**STABMIX**  
Tap stabiliser

---

## Symbols glossary (TT)

---

- |   |  |
|---|--|
|  <p>ESC: o manípulo posicionado a meio dispensa apenas água fria. Para obter água quente é necessário que o manípulo ultrapasse a posição central. Desta forma, a utilização normal não aciona a caldeira, mas apenas quando o utilizador o deseja expressamente.</p> |  <p>WSC: o manípulo prende a meio para fornecer até 50% de água, quantidade suficiente para as atividades normais. Para o fornecimento de 100% da água deve ser exercida força adicional sobre o manípulo de forma a desbloqueá-lo.</p> |
|  <p>Swivel spout rotation 180°</p>  |  <p>Duche com jato duplo. É possível alternar entre um modo de jato normal e um modo de spray.</p>  |
|  <p>The mobile hand shower of the Semi-Professional taps with high spout allows you to easily reach every point of the sink.</p>  |  |

## Benefit (TT)

---

Spout rotation 180°

### **Mobile shower semi-professional**

Practical mobile shower to easily reach every point of the sink

The mobile shower of the semi-professional taps with high spout allows you to easily reach every point of the sink for more practical and comfortable use, as well as easier cleaning

### **Double jet**

Double jet shower to meet different needs in the kitchen

The double jet shower offers the possibility of simply switching between standard and spray modes for greater convenience and versatility

### **Energy Saving Cartridge**

Energy saving thanks to the special Energy Saving Cartridge (ESC) function

With the ESC function, the tap lever set in a central position supplies only cold water, instead of mixed cold and hot water as usual, saving in energy consumption. For hot water, the lever must be turned to the left

### **Water Saving Cartridge**

Water consumption can be reduced thanks to the special Water Saving Cartridge (WSC) function

With the WSC function, the tap lever stops first halfway, providing only 50% of the normal water flow, reducing water consumption. It is possible to deliver 100% water flow by completely opening the tap lever