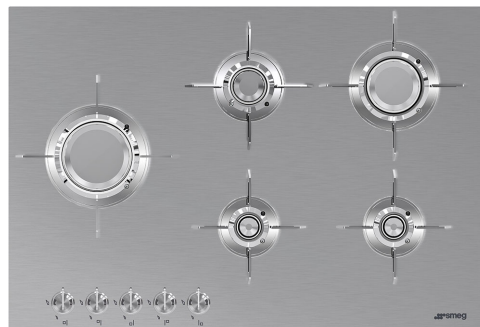


PXL675L

Product Family	Hob
Built-in type	Ultra-low profile or Fully Flushed
Dimensions	70/75 cm
Power supply	Gas
Type	Gas
EAN code	8017709217808



Aesthetics



Aesthetic	Dolce Stil Novo
Colour	Stainless steel
Finishing	Satin
Material	Stainless Steel
Type of steel	Brushed
Pan stands	Stainless steel
Pan Stand Coating	Titanium
Burners	Laminate
Burners Material	Brass
Burner Coating	Nichelato
Type of control setting	Control knobs
Control knob position	Front
No. of controls	5
Controls colour	Steel effect
Serigraphy colour	Black
Alternative colours available	Black

Program / Functions

No. of gas cook zones	5
Total no. of cook zones	5

Options

Worktop Cut-Out	482-486x700-704 mm
-----------------	--------------------

Technical Features

UR

Centre-left - Gas - UR - 3.50 kW

Rear-centre - Gas - Semi Rapid - 1.60 kW

Front-centre - Gas - AUX - 1.00 kW

Rear-right - Gas - Rapid - 2.50 kW

Front-right - Gas - AUX - 1.00 kW

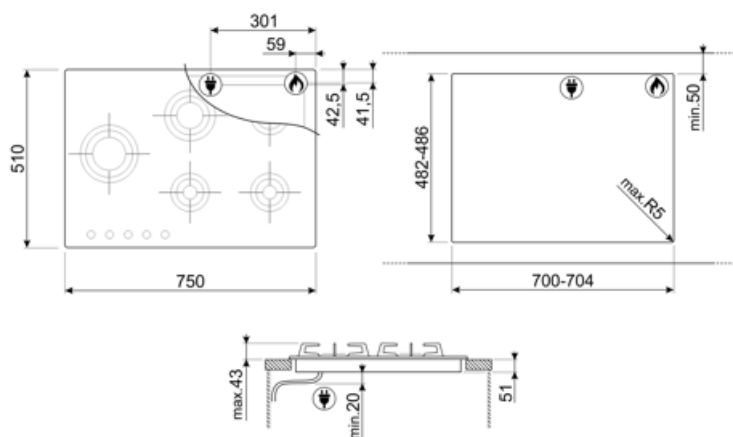
Gas safety valves	Yes	Automatic Ignition	Yes
-------------------	-----	--------------------	-----

Electrical Connection

Plug	Not present	Type of electric cable installed	Yes, Single phase
Electrical connection rating (W)	1 W	Frequency (Hz)	50/60 Hz
Voltage (V)	220-240 V	Power supply cable length	120 cm

Gas Connection

Gas Type	G20 Natural gas	Other gas connections provided	Conical
Gas connection	Cilindrical	Gas connection rating (W)	9600 W
Other gas nozzles included	G25 Natural gas, G30 GPL Liquid gas		



Compatible Accessories

6MP1BF

6 Linea knobs kit for hobs with blade flame



GRM

Coffee machine support



TPK

Stainless steel grill plate to cook Teppanyaki dishes



6MP1BFB3



GRW

Wok support



WOKGHU

Cast iron WOK Support



Symbols glossary



Knobs control



Ultra rapid burners: Powerful ultra rapid burners offer up to 5kw of power.

Benefit (TT)

Gas hobs

Consistent heat source control and easy, immediate temperature adjustment

Equipped with a thermocouple, the gas supply is cut off if the flame is extinguished for greater safety.

Inox

Maximum resistance even at high temperatures: the stainless steel surface ensures durability and deformation resistance, withstanding thermal shocks without damage

Stainless steel

Strong and easy to maintain every day: doesn't break if dropped, resists rust, easy to clean with detergents, and doesn't absorb liquids or odors.

Laminate

Top energy efficiency: thanks to Smeg's exclusive patent, heat is transferred directly to the pot, improving energy use and cooking performance.

Accurate power adjustment via knobs, for more precise cooking level control

Control knob position frontal

Instant and intuitive control thanks to front controls, easily accessible for practical use.

5 powerful burners for a dynamic kitchen: offer ample space and flexibility to cook multiple dishes at once, simplifying meal prep and improving the cooking experience.

Gas safety valves

Automatic protection against gas leaks: the thermocouple stops gas flow in the absence of flame, ensuring a safe environment even during unexpected shutdowns.