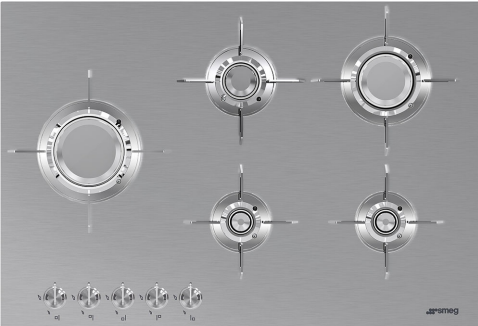


# PXL675L

Product Family	Hob
Built-in type	Ultra-low profile or Fully Flushed
Dimensions	70/75 cm
Power supply	Gas
Type	Gas
EAN code	8017709217808



## Aesthetics



Aesthetic	Dolce Stil Novo
Colour	Stainless steel
Acabamento	Satin
Material	Stainless Steel
Type of steel	Brushed
Pan stands	Stainless steel
Pan Stand Coating	Titanium
Burners	Laminate
Burners Material	Brass
Burner Coating	Nichelato
Type of control setting	Control knobs
Control knob position	Front
No. of controls	5
Controls colour	Steel effect
Illuminated control knobs	No
Control knob protection	No
Serigraphy colour	Black
Alternative colours available	Black

## Program / Functions

No. of gas cook zones	5
Total no. of cook zones	5

## Options

Corte padrão

482-486x700-704 mm

## Technical Features

UR

Centre-left - Gas - UR - 3.50 kW

Rear-centre - Gas - Semi Rapid - 1.60 kW

Front-centre - Gas - AUX - 1.00 kW

Rear-right - Gas - Rapid - 2.50 kW

Front-right - Gas - AUX - 1.00 kW

Gas safety valves	Yes	Automatic Ignition	Yes
-------------------	-----	--------------------	-----

## Accessories Included

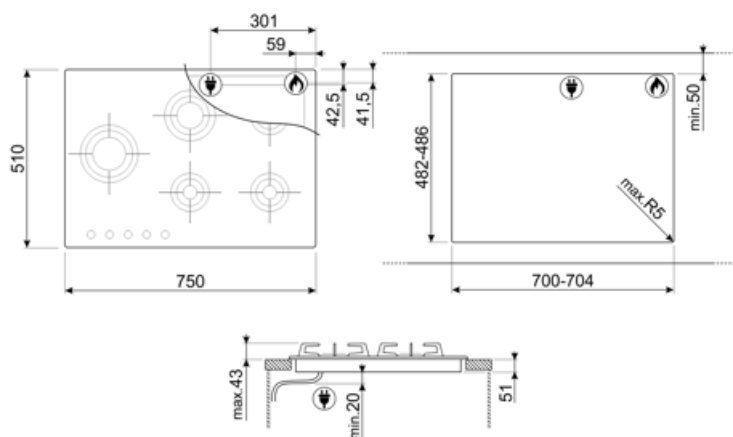
Other accessories	No
-------------------	----

## Electrical Connection

Plug	No	Frequency (Hz)	50/60 Hz
Electrical connection rating (W)	1 W	Comprimento do cabo de alimentação	120 cm
Voltage (V)	220-240 V	Ficha elétrica	No
Type of electric cable	Single phase		

## Gas Connection

Gas Type	G20 Natural gas	Other gas connections provided	Conical
Ligação ao gás	Ligação ao gás cilíndrica	Gas connection rating (W)	9600 W
Other gas nozzles included	G25 Natural gas, G30 GPL Liquid gas		



## Compatible Accessories

### 6MP1BF

6 Kit de botões Linha para placas com chama de lâmina



### GRM

Suporte moka para placas a gás



### TPK

Placa grelhadora de aço inoxidável para cozinhar pratos Teppanyaki



### 6MP1BFB3



### GRW

Suporte para wok



### WOKGHU

Suporte de ferro fundido para WOK



---

## Symbols glossary

---



Controle dos botões



Queimadores ultrarrápidos: Queimadores ultrarrápidos potentes oferecem até 5kw de potência.

---

## Benefit (TT)

---

### **Gas hobs**

Consistent heat source control and easy, immediate temperature adjustment

Equipped with a thermocouple, the gas supply is cut off if the flame is extinguished for greater safety.

### **Inox**

Maximum resistance even at high temperatures: the stainless steel surface ensures durability and deformation resistance, withstanding thermal shocks without damage

### **Stainless steel**

Strong and easy to maintain every day: doesn't break if dropped, resists rust, easy to clean with detergents, and doesn't absorb liquids or odors.

### **Laminate**

Top energy efficiency: thanks to Smeg's exclusive patent, heat is transferred directly to the pot, improving energy use and cooking performance.

Accurate power adjustment via knobs, for more precise cooking level control

### **Control knob position frontal**

Instant and intuitive control thanks to front controls, easily accessible for practical use.

5 powerful burners for a dynamic kitchen: offer ample space and flexibility to cook multiple dishes at once, simplifying meal prep and improving the cooking experience.

### **Gas safety valves**

Automatic protection against gas leaks: the thermocouple stops gas flow in the absence of flame, ensuring a safe environment even during unexpected shutdowns.