

# SRV596GH5



Product Family	Hob
Built-in	Traditional
Dimensions	90 cm
Power supply	Gas
Type	Gas
EAN code	8017709110505



## Aesthetics



Aesthetics	Contemporary
Colour	Stainless steel
Finishing	Brushed
Material	Stainless Steel
Type of steel	Brushed
Pan stands	Cast iron
Type of control setting	Control knobs
Control knobs position	Front
No. of controls	6
Controls colour	Silver
Logo	Embossed
Alternative colours available	Beige, Terre de France

## Program / Functions

No. of gas cook zones	5
Total no. of cook zones	5

## Options

Standard cut out	478-482x839-844 mm
------------------	--------------------

## Technical Features

**UR**

Front left - Gas - AUX - 1.10 kW  
 Rear left - Gas - Rapid - 3.10 kW  
 Central - Gas - 2UR (dual) - 5.00 kW  
 Rear right - Gas - Semi Rapid - 1.70 kW  
 Front right - Gas - Semi Rapid - 1.70 kW  
 Gas safety valves Yes

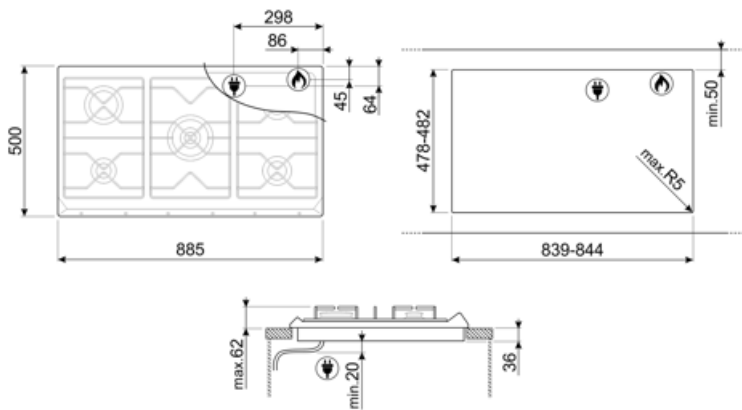
**Automatic Ignition** Yes

## Electrical Connection

**Power supply cable length** 120 cm **Plug** No

## Gas Connection

<b>Gas Type</b>	G20 Natural gas	<b>Gas connection rating (W)</b>	12400 W
<b>Gas connection</b>	Cilindrical	<b>Gas connection distance, horizontal</b>	86 mm
<b>Other gas connections provided</b>	Conical	<b>Gas connection distance, vertical</b>	45 mm



## Compatible Accessories

### 6MP700AO

Hob knobs set - Cortina Anthracite/Old brass



### 6MP700PO

Hob knobs set - Cortina Cream/Old brass



### 6MPF2465X

Hob knobs set - Cucina



### GRW

Wok support



### 6MP700BS

Hob knobs set - Cortina Silver/Silver



### 6MP800P



### GGB90





Cast Iron pan stands suitable for 90 cm hobs.



---

## Symbols glossary

---

- |  |  |   |  |
|--|--|---|--|
|  | Standard installation: Traditional installation in tabletop, suitable for any kitchen sets |  | Heavy duty cast iron pan stands: for maximum stability and strength. |
|  | Ultra rapid burners: Powerful ultra rapid burners offer up to 5kw of power.                |  | Knobs control  |