

# SRV896POGH



Product Family	Hob
Built-in type	Traditional
Dimensions	90 cm
Power supply	Gas
Type	Gas
EAN code	8017709233334



## Aesthetics



Aesthetic	Coloniale
Colour	Cream
Material	Enamelled
Pan stands	Cast iron
Type of control setting	Control knobs
Control knob position	Front
No. of controls	6
Controls colour	Antique brass
Serigraphy colour	Gold
Alternative colours available	Anthracite, Beige

## Programme / Functions

Total no. of cook zones	5
No. of gas cook zones	5

## Options

Worktop Cut-Out	478-482x839-844 mm
-----------------	--------------------

## Technical Features



Front-left - Gas - AUX - 1.10 kW

Rear-left - Gas - Rapid - 3.10 kW  
 Central - Gas - 2UR (dual) - 5.00 kW  
 Rear-right - Gas - Semi Rapid - 1.70 kW  
 Front-right - Gas - Semi Rapid - 1.70 kW  
 Gas safety valves Yes

Automatic Ignition Yes

## Electrical Connection

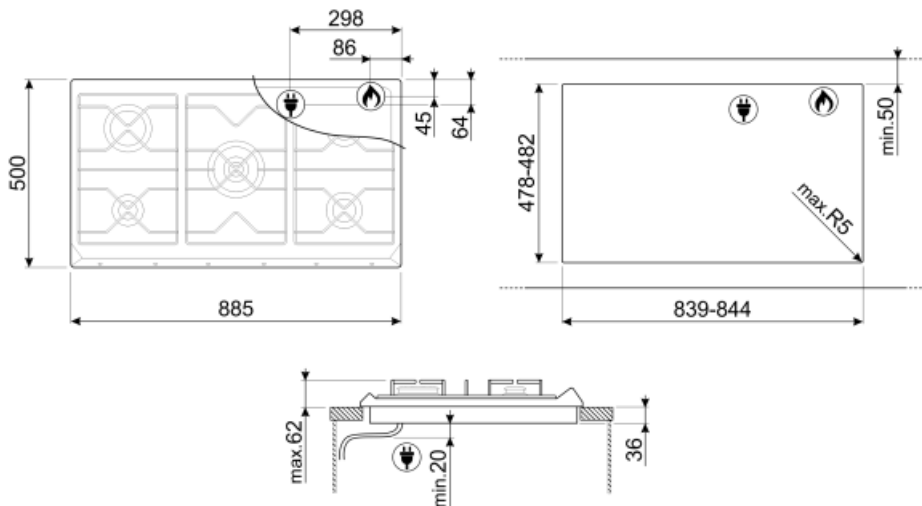
Plug Not present  
 Electrical connection rating (W) 1 W  
 Voltage (V) 220-240 V

Type of electric cable installed Yes, Single phase  
 Frequency (Hz) 50/60 Hz  
 Power supply cable length 120 cm

## Gas Connection

Gas Type G20/G25 natural gas  
 Gas connection Cylindrical

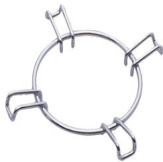
Other gas connections provided Conical  
 Gas connection rating (W) 12400 W



## Not included accessories



**BB3679**  
Cast Iron griddle



**GRW**  
Wok support



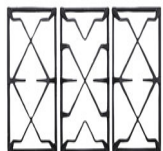
**6MP800P**



**TPK**  
Stainless steel grill plate to cook  
Teppanyaki dishes



**C90CNE-2**  
Black cover suitable for 90 cm gas hobs  
with frontal controls.



**GGB90**  
Cast Iron pan stands suitable for 90 cm  
hobs.



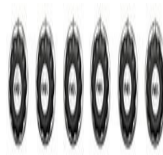
**6MP700AO**  
Hob knobs set - Cortina Anthracite/Old  
brass



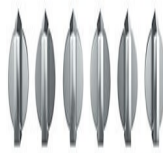
**6MP700BS**  
Hob knobs set - Cortina Silver/Silver



**C90CEB/1**  
White cover suitable for 90 cm gas  
hobs with frontal controls.



**6MP700AX**  
Hob knobs set - Cortina  
Anthracite/Silver



**6MPF2465X**  
Hob knobs set - Selezione



**6MP700PO**  
Hob knobs set - Cortina Cream/Old  
brass







**C90CX/1**  
Glass cover with stainless steel frame  
suitable for 90 cm hobs with frontal  
control.

---

## Symbols glossary (TT)

---

- |  |  |   |  |
|--|--|---|--|
|  | Standard installation: Traditional installation in tabletop, suitable for any kitchen sets |  | Heavy duty cast iron pan stands: for maximum stability and strength. |
|  | Ultra rapid burners: Powerful ultra rapid burners offer up to 5kw of power.                |  | Knobs control  |