

# VR12S3434RS

|               |                 |
|---------------|-----------------|
| Sink material | Stainless steel |
| Type          | Welded bowl     |
| No. of bowls  | 2               |
| EAN code      | 8017709308179   |



## Aesthetics



|                  |                 |                                   |                    |
|------------------|-----------------|-----------------------------------|--------------------|
| <b>Aesthetic</b> | Universale      | <b>Building in type</b>           | Flush fitted, Flat |
| <b>Colour</b>    | Stainless steel | <b>Logo</b>                       | Embossed           |
| <b>Finishing</b> | Brushed         | <b>Tap hole / precut tap hole</b> | 2 Tapholes         |
| <b>Series</b>    | Mira            |                                   |                    |

|         | Bowl type RH   | Bowl thickness (mm) | Bowl dimensions, WxDxH (mm) | Bowl depth (mm) | Radius corner right bowl (mm) | Overflow          | Strainer position | Strainer dimension |
|---------|----------------|---------------------|-----------------------------|-----------------|-------------------------------|-------------------|-------------------|--------------------|
| RH Bowl | Minimum radius | 1                   | 340 x 400 x 200             | 200             | 12                            | Yes, flush fitted | Wall position     | 3.5"               |
| LH Bowl | Minimum radius | 1                   | 340 x 400 x 200             | 200             | 12                            | Yes, flush fitted | Wall position     | 3.5"               |

## Technical Features



|                                       |                |  |             |
|---------------------------------------|----------------|--|-------------|
| <b>Frame thickness</b>                | 1 mm           | <b>Popup command</b>                         | Yes, single |
| <b>Dimensions of the product (mm)</b> | 201x750x510 mm | <b>Popup command type</b>                    | Push        |
| <b>Cutout dimension topmount (mm)</b> | 735x495 mm     | <b>Dividing wall width</b>                   | 25 mm       |
| <b>Base unit size</b>                 | 80 cm          | <b>No. of clips</b>                          | 11          |
| <b>Tap hole</b>                       | 2              | <b>Type of clips</b>                         | Standard    |
| <b>Tap hole diameter</b>              | 35 mm          | <b>Possibility to install waste disposal</b> | No          |

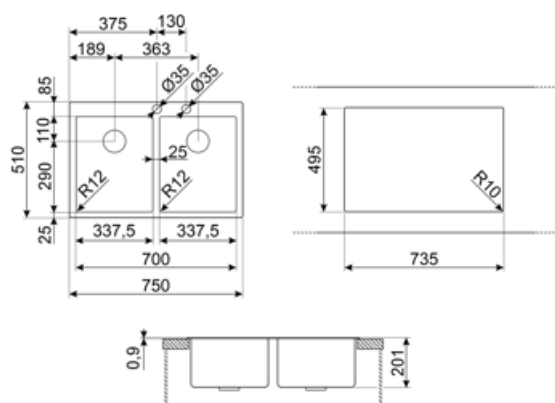
## Accessories included



**Accessories for  
installation**

Strainer, Savespace siphon  
with dishwasher outlet  
connection, Fixing clips

**Integrated flush waste  
kit** Yes



---

## Compatible Accessories

---



### CB25MN

Single HPE chopping board to fit minimum radius bowls, black matt, measures 250 x 410 H 12 mm, dishwasher safe



### COL19

St/Steel colander to fit MINIMUM radius mm bowl, measures 200 x 410 x 26 mm



### COL36

St/steel colander for MINIMUM radius bowls, measures 370 x 410 x 30 mm



### CB28QU

Single HPL chopping board for minimum radius, oak, measures 280 x 418 H 12 mm



### COL19H

St/Steel colander to fit MINIMUM radius mm bowl, measures 200 x 410 x 100 mm



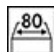
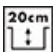




### KITPUSH

1 Bowl automatic pop up in AISI304 with push button ONLY for integrated waste kit bowls R12

---

## Symbols glossary

---

|  |  |   |   |
|--|--|---|---|
|  | Cupboard width required for sink installation.   |  | Sink depth - depending on the model, the depth can be from 13 to 24,5.  |
|  | Flat: Installation of product with flat edge.  |  | Flush-fitted installation: Models of sinks/hobs which are integrated flush with the tabletop of a kitchen unit. |
|  | A unique waste kit totally integrated with the sink gives an elegant effect and guarantees greater hygiene with the continuous surface allowing you to combine convenience with total safety during the food preparation. The new plug design is ergonomic and it's easier to extract. |  | On this sink it is not possible to install the waste disposal   |