

# VSTQ3838

Sink material	Stainless steel
Type	Squared bowl
No. of bowls	2
EAN code	8017709151904



## Aesthetics



<b>Aesthetic</b>	Universale	<b>Building in type</b>	Undermount
<b>Series</b>	Quadra	<b>Logo</b>	Embossed
<b>Colour</b>	Stainless steel	<b>Tap hole / precut tap hole</b>	No Taphole
<b>Finishing</b>	Satin		

	Bowl type RH	Bowl thickness (mm)	Bowl dimensions, WxDxH (mm)	Bowl depth (mm)	Overflow	Strainer position	Strainer dimension
RH Bowl	Squared	1	380 x 400 x 210	210	Yes, traditional	Wall position	3.5"
LH Bowl	Squared	1	380 x 400 x 210	210	Yes, traditional	Wall position	3.5"

## Technical Features

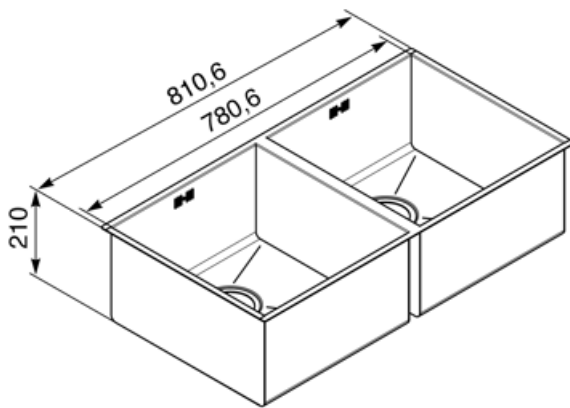
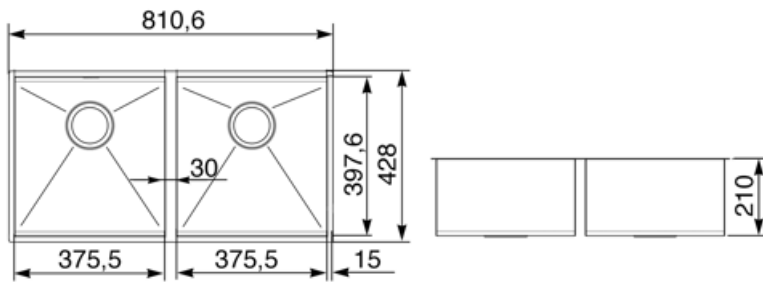


<b>Frame thickness</b>	1 mm	<b>Tap hole diameter</b>	35 mm
<b>Dimensions of the product (mm)</b>	210x811x428 mm	<b>Dividing wall width</b>	30 mm
<b>Cutout dimension undermount (mm)</b>	vedi dima mm	<b>No. of clips</b>	8
<b>Undermount cutout radius</b>	5 mm	<b>Type of clips</b>	Undermount clip
<b>Base unit size</b>	90 cm		

## Accessories Included

Accessories for installation

Strainer, Savespace siphon with dishwasher outlet connection, Fixing clips



---

## Not included accessories

---



### KITFD050

Waste disposal 0,5 HP, Motor: 1/2 horsepower, Fits all sinks with 3 1/2" waste outlet



### KITFD100

Waste disposal 1 HP, Motor: 1/2 horsepower, Fits all sinks with 3 1/2" waste outlet



### STABMIX

Tap stabiliser



### KITFD075

Waste disposal 0,75 HP, Motor: 1/2 horsepower, Fits all sinks with 3 1/2" waste outlet



### RND2V

2 Bowls standard Rondò waste kit with rectangular overflow

---

## Symbols glossary (TT)

---



Cupboard width required for sink installation



Sink depth - depending on the model, the depth can be from 13 to 24,5



Under table top installation: The sink is fixed under tabletop, which extends the work surface and the depth of the sink.

---

## Benefit (TT)

---

### Two bowls

Two bowls for greater versatility and dual functionality