

# VSTQ72-2

Sink material	Stainless steel
Sink type	Squared bowl
No. of bowls	1
EAN code	8017709125608



## Aesthetics



Aesthetics	Universal	Building in type	Undermount
Colour	Stainless steel	Logo	Embossed
Finishing	Brushed	Tap hole / precut tap hole	No Taphole
Series	Quadra		

	Bowl type	Bowl dimensions, WxDxH (mm)	Bowl depth (mm)	Overflow	Strainer position	Strainer dimension
Bowl	Squared	720 x 400 x 210	210	Yes, traditional	Wall position	3.5"

## Technical Features

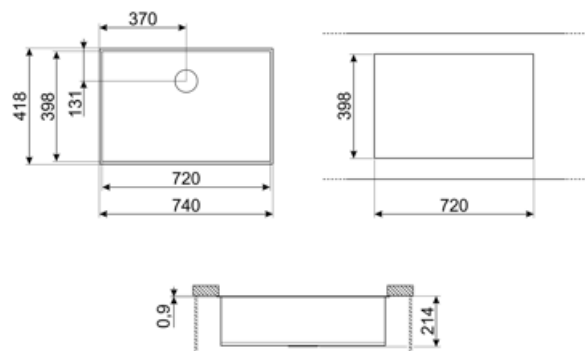


Dimensions of the product WxDxH (mm)	210x740x418 mm	Gasket type	Sealing paste
Cutout dimension undermount (mm)	398*720 mm	No. of clips	8
Cutout radius	5 mm	Type of clips	Undermount clip
Base unit size	80 cm	Possibility to install waste disposal	Yes, single
Tap hole diameter	35 mm		

## Accessories Included

## Accessories for installation

Strainer, Siphon with  
dishwasher outlet  
connection, Fixing clips



---

## Compatible Accessories

---



**3712**

Siphon single bowl sinks (dishwasher connection included)



**KITFD050**

Waste disposal 0,5 HP Motor: 1/2 horsepower Fits all sinks with 3 1/2" waste outlet



**KITFD100**

Waste disposal 1 HP Motor: 1 horsepower Fits all sinks with 3 1/2" waste outlet



**VSH20Q**

COLANDER SQUARE SINKS



**3713**

Siphon double bowls sinks (dishwasher connection included)



**KITFD075**

Waste disposal 0,75 HP Motor: 3/4 horsepower Fits all sinks with 3 1/2" waste outlet



**RND1V**

Rondò waste kit 1 bowl with standard overflow

---

## Symbols glossary

---



Cupboard width required for sink installation



Sink depth - depending on the model, the depth can be from 13 to 24,5



Under table top installation: The sink is fixed under tabletop, which extends the work surface and the depth of the sink.

---

## Benefit

---

### **One bowl**

A single bowl for greater adaptability, capacity and space optimisation

### **Waste Kit**

Possibility to install the waste disposal KITFD100 to easily dispose of organic waste, saving time and effort

The waste disposal is the ideal solution for a clean and sustainable kitchen: simple to use and compact, it disposes of food waste directly from the sink, reducing kitchen bad smells and improving hygiene