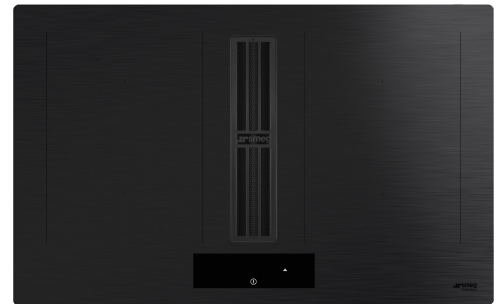
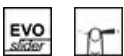


HOB382MB2

Product Family	Hob
Built-in type	Ultra-low profile or Fully Flushed
Dimensions	83 cm
Power supply	Electric
Type	Induction with integrated hood
Extraction	Extraction
Electronic control	Yes
EAN code	8017709341886
Energy efficiency class (EEC)	A+



Aesthetics



Aesthetic	Classica
Colour	Matt Black
Finishing	Glass
Material	Glass
Glass type	Ceramic
Glass edge	Straight edge
Pan stands	Stainless steel
Double ceramization	Yes
Type of control setting	EVO Slider
Slider	Yes
LED colours	White
Control knob position	Front
Serigraphy colour	Grey

Programs / Functions



No. of induction cook zones	4
Time-setting options	Spegnimento automatico
No. of cooking zones with booster	4
No. of Flexible zones	2
Main on/off switch	Yes
Power levels	9
Total no. of cook zones	4

Options



Multizone Option	Yes	Residual time indicator	Yes
Flexible Zone Type	MultiZone	Limited Power	Si Advance
Worktop Cut-Out	490x750 mm	Consumption Mode	
Keep warm automatic function	Yes	Limited Power Consumption Mode in W	2800, 3500, 4500, 7400 W
End cooking timer	4	Showroom Demo Option	Yes
Pause option	Yes	Control Lock / Child Safety	Yes
Minute minder	1	Cleaning option	Yes
End of cooking alarm	Yes	Quick start	Yes
		Rapid level selection	Yes

Technical Features



Front-left - Induction - Multizone - 2.10 kW - Booster 3.0 kW - 21.0x19.0 cm
 Rear-left - Induction - Multizone - 2.10 kW - Booster 3.00 kW - 21.0x19.0 cm
 Rear-right - 2.10 kW - Booster 3.00 kW - 21.0x19.0 cm
 Front-right - 2.10 kW - Booster 3.00 kW - 21.0x19.0 cm
 Multizone left - Booster 3.70 kW - 39.0x21.0 cm
 Multizone right - Booster 3.70 kW - 39.0x21.0 cm

Automatic setting according to pan dimension	Yes	Automatic switch off when overflow	Yes
pan detection	Yes, min 9 cm	Residual heat indicator	Yes
Permanent Automatic Pot Detection with indication of the relative control	Yes	Protection against accidental start up	Yes

Accessories Included

Other accessories	Filtering kit and charcoal filter regenerable included
--------------------------	--

Electrical Connection

Plug	Not present	Type of electric cable supplied	Yes, Single and Double phase
Electrical connection rating (W)	7620 W	Frequency (Hz)	50/60 Hz
Current	33 A	Power supply cable length	120 cm
Voltage (V)	220-240 V	Terminal box	6 poles
Voltage 2 (V)	380-415 V		

Controls (hood)

Hood control setting	Touch control	Display	Yes
Led color	Bianco		

Programs / Functions (hood)

Delay function	Yes	Hood time setting	Delay
No. of speeds	8	Other options	Kit for Recirculation and Extraction included
Intensive speed	2	Automatic connection between integrated hood and hob	yes

Technical Features (Hood)

Free outlet maximum capacity	650 m ³ /h	Anti-grease filters	Inox
Motor power	220 W	Charcoal filters included	YES, regenerable
No. of filters	1	Filter replacement indicator	Yes

Performance / Energy Label (hood)

Fluid Dynamic Efficiency (FDE)	32,10	Airborne acoustical A-weighted sound Power Emission at maximum speed (SPEmax)	68 dBA
Fluid Dynamic Efficiency class (FDEC)	A	Airbourne acoustical A-weighted sound power emission at boost speed (SPEboost)	73 dBA
Lighting Efficiency (LE)	0,0 lux/W	Power Consumption in Off mode (Po)	0,49 W
Lighting Efficiency Class (LEC)	NA	Time increase factor (F)	0,8
Grease Filtering Efficiency (GFE)	85,1 %	Energy Efficiency Index	44,2
Grease Filtering Efficiency Class (GFEC)	B	Measured air flow rate at best efficiency point (Qbep)	320 m ³ /h
Air flow at mininum speed (Qmin)	230 m ³ /h	Measured air pressure at best efficiency point (Pbep)	502 Pa
Air flow at maximum speed (Qmax)	500 m ³ /h	Measured electric power input at best efficiency point (Wbep)	139 W
Air flow at boost speed (Qboost)	630 m ³ /h	Sound power level at highest setting (Lwa)	68 dBA
Airbourne acouistical A-weighted sound Power Emission at minimum speed (SPEmin)	49 dBA		

Speed 1

Extraction rate IEC 61591	230 m ³ /h
Noise level IEC 60704-2-13	49 dBA
Pressure	280 Pa
Power	40 W

Speed 2

Extraction rate IEC 61591	270 m ³ /h
Noise level IEC 60704-2-13	51 dBA
Pressure	370 Pa
Power	50 W

Speed 3

Extraction rate IEC 61591	340 m ³ /h
Noise level IEC 60704-2-13	55 dBA
Pressure	400 Pa
Power	70 W

Speed 4

Extraction rate IEC 61591	370 m ³ /h
Noise level IEC 60704-2-13	60 dBA
Pressure	450 Pa
Power	90 W

Speed 5

Extraction rate IEC 61591	400 m ³ /h
Noise level IEC 60704-2-13	62 dBA
Pressure	500 Pa
Power	100 W

Speed 6

Extraction rate IEC 61591	435 m ³ /h
Noise level IEC 60704-2-13	63 dBA
Pressure	550 Pa
Power	120 W

Speed 7

Extraction rate IEC 61591	460 m ³ /h
Noise level IEC 60704-2-13	65 dBA
Pressure	600 Pa
Power	150 W

Speed 8

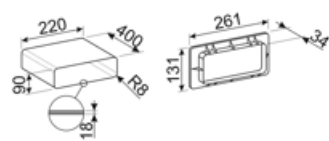
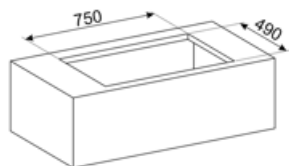
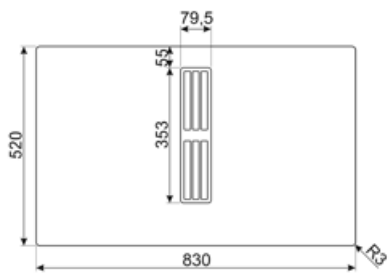
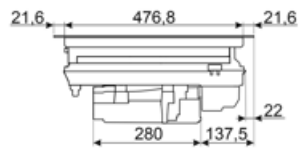
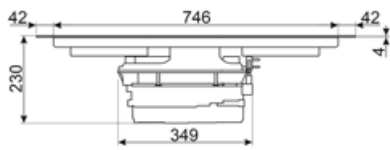
Extraction rate IEC 61591	500 m ³ /h
Noise level IEC 60704-2-13	68 dBA
Pressure	620 Pa
Power	170 W

Intensive speed

Extraction rate (IEC 61591)	540 m ³ /h
Noise level IEC 60704-2-13	70 dBA
Pressure	625 Pa
Power	180 W

Intensive Speed 2

Extraction rate IEC 61591	630 m ³ /h
Noise level IEC 60704-2-13	73 dBA
Pressure	630 Pa
Power	220 W



Not included accessories



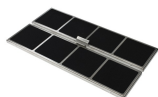
CON60H

Flat duct connector for tubes 220*60 mm. It help to connect more tubes of the kit KITEHOBD4



CON90H

Connector for rectangular tubes high 90 mm. Size external 227*94*63 mm, internal 223*90*63 mm



FLTHOBD2

n.2 high-performance carbon filters regenerable up to 8 times, washing it in the dishwasher and drying it at max 70° in the oven for max 120 minutes



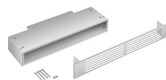
GRI60H

Rectangular Louvred grille, external size 246*80 mm and internal 226*60*50 mm



GRILLPLATE

Universal griddle for induction, gas, ceramic and electric hobs. Non-stick surface ideal for cooking meat, cheese and vegetables. Dimensions: 410 x 240 mm.



GRIX6H

Stainless steel ventilation grille, size 426*60 mm.



KITDT50X10

tape for installation kit of HOBD*2. 10 m lenght. 50 mm width.



KITEHOBD10

Ducted kit for HOBD*2 with tubes and curve high 10 mm.



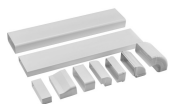
KITEHOBD4

Filtering kit (lateral outlet) optional for Hobd: tube 1,5 mt and curve, high 60 mm



KITREBFLOW

Rectangular grid used in ventilation system, 290 x 160 mm. Backdraft Damper for for regulating the air flow from the kitchen. Compatible for HOBD*2 models.



KITRHOB6

Mounting kit for recirculating installation: pipes and curves to be mounted in a plinth of minimum 6cm height. Available for HOBD*2 series.

KITSEBL










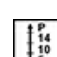






Squared grid used in ventilation system with backdraft Damper for regulating the air flow from the kitchen. Compatible for HOBD*2 models.



TPK

Stainless steel grill plate to cook Teppanyaki dishes

Symbols glossary

 <p>Permanent auto pot detection</p>	 <p>Power booster: option allows the zone to work at full power when very intense cooking is necessary.</p>
 <p>Child lock: some models are fitted with a device to lock the programme/cycle so it cannot be accidentally changed.</p>	 <p>Evolution Slider totally Back-lighted ghost effect</p>
 <p>The slider control panel allows you to adjust the power simply by passing your finger across the touch device.</p>	 <p>This function allows you to keep cooked food warm without burner it</p>
 <p>Multizone: allows several pans to be used at once, large or small, offering freedom of placement and greater flexibility</p>	 <p>Overfill protection: The special overfill protection shuts down the stove in the presence of overflow of liquids.</p>
 <p>All cooking zones can be reduced to the minimum power level, so the hob can be left unattended for a short period without food overcooking or burning. Then just press again this function, the previously set power levels can be reactivated.</p>	 <p>Quick selection, with one touch cooking begins at the highest level, then automatically reduces after time. Ideal for dishes that require quick boiling and then continued cooking without constant control (eg beef broth).</p>
 <p>Quick Start function: the chosen temperature is reached faster. The heating element works at maximum power until the right temperature is reached.</p>	 <p>Indication of residual heat: After the glass ceramic hob is switched off the residual heat indicator shows which of the heating zones still remains hot. When the temperature drops below 60 ° C, the indicator goes out.</p>
 <p>Time elapsed: shows how long the cooking zone has been in use.</p>	 <p>Timer: All ceramic hobs have a timer which automatically ends cooking after a preset time.</p>
 <p>Min diameter pot detection of 9 cm</p>	 <p>Possibility to set the maximum power absorption of the hob</p>